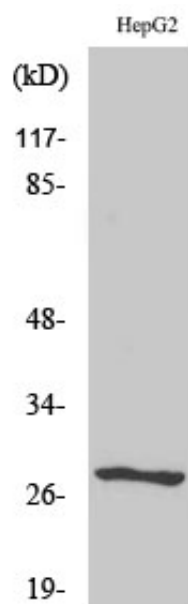




NPDC-1 Polyclonal Antibody

Catalog_no :	AT3180
Applications :	WB,ELISA
Reactivity :	Human,Mouse,Rat
Category :	抗原抗体
Size :	100µg/50µg/20µg
Gene_name :	NPDC1
Protein_name :	Neural proliferation differentiation and control protein 1
Humangene_id :	56654
Humanswissprot_no :	Q9NQX5
Mousegene_id :	18146
Mouseswissprot_no :	Q64322
Immunogen :	The antiserum was produced against synthesized peptide derived from human NPDC1. AA range:189-238
Specificity :	NPDC-1 Polyclonal Antibody detects endogenous levels of NPDC-1 protein.
Formulation :	Liquid in PBS containing 50% glycerol, 0.5% BSA and 0.02% sodium azide.
Source :	Rabbit
Dilution :	Western Blot: 1/500 - 1/2000. ELISA: 1/20000. Not yet tested in other applications.
Purification :	The antibody was affinity-purified from rabbit antiserum by affinity-chromatography using epitope-specific immunogen.
Concentration :	1 mg/ml
Storage_stability :	-20°C/1 year
Msds :	MSDS_Antibody.pdf
Other_name :	NPDC1; Neural proliferation differentiation and control protein 1; NPDC-1
Molecular Weight :	28KD

Product Images



Western Blot analysis of various cells using NPDC-1 Polyclonal Antibody