

NPY1-R Polyclonal Antibody

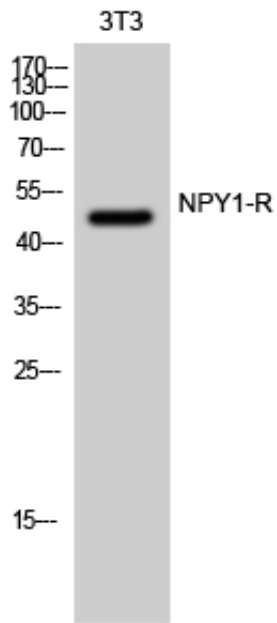
Catalog_no :	AT3183
Applications :	WB,IF,ELISA
Reactivity :	Human,Mouse,Rat
Category :	抗原抗体
Size :	100µg/50µg/20µg
Gene_name :	NPY1R
Protein_name :	Neuropeptide Y receptor type 1
Humangene_id :	4886
Humanswissprot_no :	P25929
Mousegene_id :	18166
Mouseswissprot_no :	Q04573
Ratswissprot_no :	P21555
Immunogen :	The antiserum was produced against synthesized peptide derived from human NPY1R. AA range:221-270
Specificity :	NPY1-R Polyclonal Antibody detects endogenous levels of NPY1-R protein.
Formulation :	Liquid in PBS containing 50% glycerol, 0.5% BSA and 0.02% sodium azide.
Source :	Rabbit
Dilution :	Western Blot: 1/500 - 1/2000. Immunofluorescence: 1/200 - 1/1000. ELISA: 1/5000. Not yet tested in other applications.
Purification :	The antibody was affinity-purified from rabbit antiserum by affinity-chromatography using epitope-specific immunogen.
Concentration :	1 mg/ml
Storage_stability :	-20°C/1 year
Msds :	MSDS_Antibody.pdf
Other_name :	NPY1R; NPYR; NPY1; Neuropeptide Y receptor type 1; NPY1-R



Molecular
Weight :

48KD

Product Images



Western Blot analysis of 3T3 cells using NPY1-R Polyclonal Antibody