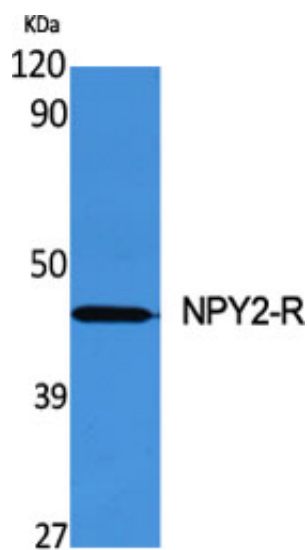


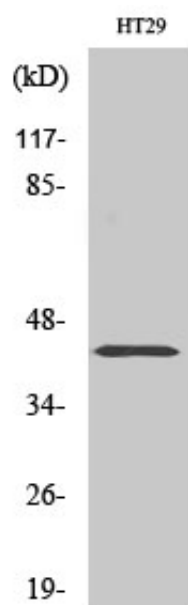
## NPY2-R Polyclonal Antibody

Catalog_no :	AT3184
Applications :	WB,IF,ELISA
Reactivity :	Human,Mouse,Rat
Category :	抗原抗体
Size :	100µg/50µg/20µg
Gene_name :	NPY2R
Protein_name :	Neuropeptide Y receptor type 2
Humangene_id	<a href="#">4887</a>
:	
Humanswissprot	<a href="#">P49146</a>
_no :	
Mouseswissprot	<a href="#">P97295</a>
_no :	
Immunogen :	The antiserum was produced against synthesized peptide derived from human NPY2R. AA range:1-50
Specificity :	NPY2-R Polyclonal Antibody detects endogenous levels of NPY2-R protein.
Formulation :	Liquid in PBS containing 50% glycerol, 0.5% BSA and 0.02% sodium azide.
Source :	Rabbit
Dilution :	Western Blot: 1/500 - 1/2000. Immunofluorescence: 1/200 - 1/1000. ELISA: 1/5000. Not yet tested in other applications.
Purification :	The antibody was affinity-purified from rabbit antiserum by affinity-chromatography using epitope-specific immunogen.
Concentration :	1 mg/ml
Storage_stability	-20°C/1 year
:	
Msds :	MSDS_Antibody.pdf
Other_name :	NPY2R; Neuropeptide Y receptor type 2; NPY2-R; NPY-Y2 receptor; Y2 receptor
Molecular Weight :	43KD

## Product Images



Western Blot analysis of various cells using NPY2-R Polyclonal Antibody diluted at 1 : 500



Western Blot analysis of HT29 cells using NPY2-R Polyclonal Antibody diluted at 1 : 500