

NPY5-R Polyclonal Antibody

Catalog_no :	AT3185
Applications :	WB,IHC-p,IF,ELISA
Reactivity :	Human,Mouse,Rat
Category :	抗原抗体
Size :	100µg/50µg/20µg
Gene_name :	NPY5R
Protein_name :	Neuropeptide Y receptor type 5
Humangene_id	4889
:	
Humanswissprot	Q15761
_no :	
Mousegene_id :	18168
Mouseswissprot	O70342
_no :	
Ratgene_id :	25340
Ratswissprot_no	Q63634
:	
Immunogen :	The antiserum was produced against synthesized peptide derived from human NPY5R. AA range:221-270
Specificity :	NPY5-R Polyclonal Antibody detects endogenous levels of NPY5-R protein.
Formulation :	Liquid in PBS containing 50% glycerol, 0.5% BSA and 0.02% sodium azide.
Source :	Rabbit
Dilution :	Western Blot: 1/500 - 1/2000. Immunohistochemistry: 1/100 - 1/300. Immunofluorescence: 1/200 - 1/1000. ELISA: 1/20000. Not yet tested in other applications.
Purification :	The antibody was affinity-purified from rabbit antiserum by affinity-chromatography using epitope-specific immunogen.
Concentration :	1 mg/ml
Storage_stability	-20°C/1 year
:	

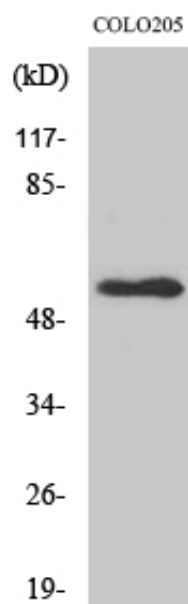


Msd : MSDS_Antibody.pdf

Other_name : NPY5R; NPYR5; Neuropeptide Y receptor type 5; NPY5-R; NPY-Y5 receptor; NPYY5-R; Y5 receptor

Molecular Weight : 48KD

Product Images



Western Blot analysis of various cells using NPY5-R Polyclonal Antibody