



## NRF-1 Polyclonal Antibody

Catalog_no :	AT3188
Applications :	WB,ELISA
Reactivity :	Human,Mouse,Rat
Category :	抗原抗体
Size :	100µg/50µg/20µg
Gene_name :	NRF1
Protein_name :	Nuclear respiratory factor 1
Humangene_id :	<a href="#">4899</a>
Humanswissprot_no :	<a href="#">Q16656</a>
Mousegene_id :	<a href="#">18181</a>
Mouseswissprot_no :	<a href="#">Q9WU00</a>
Ratswissprot_no :	<a href="#">Q62792</a>
Immunogen :	The antiserum was produced against synthesized peptide derived from human NRF1. AA range:221-270
Specificity :	NRF-1 Polyclonal Antibody detects endogenous levels of NRF-1 protein.
Formulation :	Liquid in PBS containing 50% glycerol, 0.5% BSA and 0.02% sodium azide.
Source :	Rabbit
Dilution :	Western Blot: 1/500 - 1/2000. ELISA: 1/5000. Not yet tested in other applications.
Purification :	The antibody was affinity-purified from rabbit antiserum by affinity-chromatography using epitope-specific immunogen.
Concentration :	1 mg/ml
Storage_stability :	-20°C/1 year
Msds :	<a href="#">MSDS_Antibody.pdf</a>
Other_name :	NRF1; Nuclear respiratory factor 1; NRF-1; Alpha palindromic-binding protein; Alpha-pal

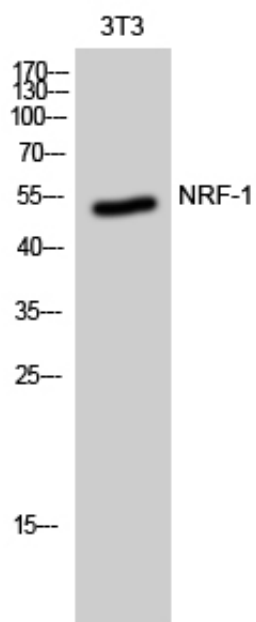


Molecular  
Weight :

54KD

---

## Product Images



Western Blot analysis of 3T3 cells using NRF-1 Polyclonal Antibody cells nucleus extracted by Minute TM Cytoplasmic and Nuclear Fractionation kit (SC-003, Inventbiotech, MN, USA).