



Nrf2 Polyclonal Antibody

Catalog_no :	AT3189
Applications :	WB,IHC-p,IF,ELISA
Reactivity :	Human,Mouse,Rat
Category :	抗原抗体
Size :	100µg/50µg/20µg
Gene_name :	NFE2L2
Protein_name :	Nuclear factor erythroid 2-related factor 2
Humangene_id	4780
:	
Humanswissprot	Q16236
_no :	
Mousegene_id :	18024
Mouseswissprot	Q60795
_no :	
Ratgene_id :	83619
Ratswissprot_no	O54968
:	
Immunogen :	The antiserum was produced against synthesized peptide derived from human Nrf2. AA range:556-605
Specificity :	Nrf2 Polyclonal Antibody detects endogenous levels of Nrf2 protein.
Formulation :	Liquid in PBS containing 50% glycerol, 0.5% BSA and 0.02% sodium azide.
Source :	Rabbit
Dilution :	Western Blot: 1/500 - 1/2000. Immunohistochemistry: 1/100 - 1/300. Immunofluorescence: 1/200 - 1/1000. ELISA: 1/40000. Not yet tested in other applications.
Purification :	The antibody was affinity-purified from rabbit antiserum by affinity-chromatography using epitope-specific immunogen.
Concentration :	1 mg/ml
Storage_stability	-20°C/1 year
:	

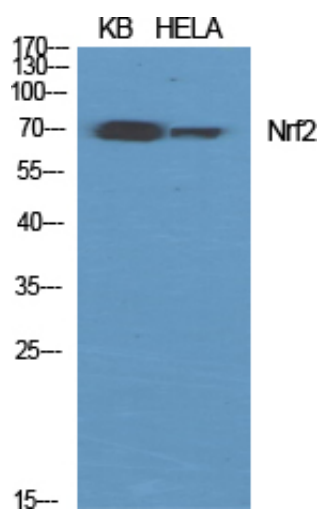


Msd : MSDS_Antibody.pdf

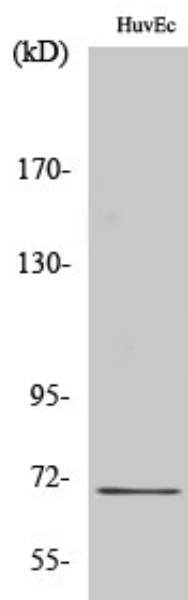
Other_name : NFE2L2; NRF2; Nuclear factor erythroid 2-related factor 2; NF-E2-related factor 2; NFE2-related factor 2; HEBP1; Nuclear factor; erythroid derived 2, like 2

Molecular Weight : 75-100KD

Product Images



Western Blot analysis of various cells using Nrf2 Polyclonal Antibody diluted at 1 : 1000



Western Blot analysis of HuvEc cells using Nrf2 Polyclonal Antibody diluted at 1 : 1000