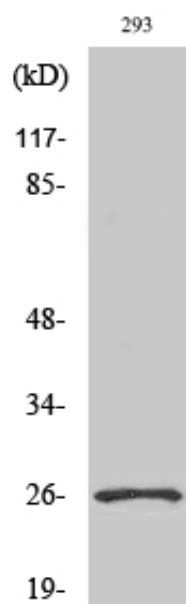




Nrl Polyclonal Antibody

Catalog_no :	AT3193
Applications :	WB,ELISA
Reactivity :	Human,Mouse
Category :	抗原抗体
Size :	100µg/50µg/20µg
Gene_name :	NRL
Protein_name :	Neural retina-specific leucine zipper protein
Humangene_id :	4901
Humanswissprot_no :	P54845
Mousegene_id :	18185
Mouseswissprot_no :	P54846
Immunogen :	The antiserum was produced against synthesized peptide derived from human NRL. AA range:19-68
Specificity :	Nrl Polyclonal Antibody detects endogenous levels of Nrl protein.
Formulation :	Liquid in PBS containing 50% glycerol, 0.5% BSA and 0.02% sodium azide.
Source :	Rabbit
Dilution :	Western Blot: 1/500 - 1/2000. ELISA: 1/10000. Not yet tested in other applications.
Purification :	The antibody was affinity-purified from rabbit antiserum by affinity-chromatography using epitope-specific immunogen.
Concentration :	1 mg/ml
Storage_stability :	-20°C/1 year
Msds :	MSDS_Antibody.pdf
Other_name :	NRL; D14S46E; Neural retina-specific leucine zipper protein; NRL
Molecular Weight :	25KD

Product Images



Western Blot analysis of various cells using Nrl Polyclonal Antibody cells nucleus extracted by Minute TM Cytoplasmic and Nuclear Fractionation kit (SC-003, Inventbiotech, MN, USA).