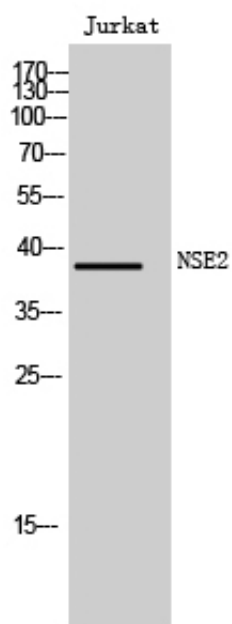




NSE2 Polyclonal Antibody

Catalog_no :	AT3194
Applications :	WB,IHC-p,ELISA
Reactivity :	Human
Category :	抗原抗体
Size :	100µg/50µg/20µg
Gene_name :	FAM84B
Protein_name :	Protein FAM84B
Humangene_id :	157638
Humanswissprot_no :	Q96KN1
Immunogen :	The antiserum was produced against synthesized peptide derived from human FAM84B. AA range:11-60
Specificity :	NSE2 Polyclonal Antibody detects endogenous levels of NSE2 protein.
Formulation :	Liquid in PBS containing 50% glycerol, 0.5% BSA and 0.02% sodium azide.
Source :	Rabbit
Dilution :	Western Blot: 1/500 - 1/2000. Immunohistochemistry: 1/100 - 1/300. ELISA: 1/10000. Not yet tested in other applications.
Purification :	The antibody was affinity-purified from rabbit antiserum by affinity-chromatography using epitope-specific immunogen.
Concentration :	1 mg/ml
Storage_stability :	-20°C/1 year
Msds :	MSDS_Antibody.pdf
Other_name :	FAM84B; BCMP101; NSE2; Protein FAM84B; Breast cancer membrane protein 101; Protein NSE2
Molecular Weight :	38KD

Product Images



Western Blot analysis of Jurkat cells using NSE2 Polyclonal Antibody