

NSF Polyclonal Antibody

Catalog_no :	<u>AT3195</u>
Applications :	<u>WB,ELISA</u>
Reactivity :	<u>Human,Mouse,Rat</u>
Category :	<u>抗原抗体</u>
Size :	<u>100µg/50µg/20µg</u>
Gene_name :	<u>NSF</u>
Protein_name :	<u>Vesicle-fusing ATPase</u>
Humangene_id	<u>4905</u>
:	<u></u>
Humanswissprot	<u>P46459</u>
_no :	<u></u>
Mousegene_id :	<u>18195</u>
Mouseswissprot	<u>P46460</u>
_no :	<u></u>
Ratgene_id :	<u>60355</u>
Ratswissprot_no	<u>Q9QUL6</u>
:	<u></u>
Immunogen :	<u>Synthesized peptide derived from NSF . at AA range: 110-190</u>
Specificity :	<u>NSF Polyclonal Antibody detects endogenous levels of NSF protein.</u>
Formulation :	<u>Liquid in PBS containing 50% glycerol, 0.5% BSA and 0.02% sodium azide.</u>
Source :	<u>Rabbit</u>
Dilution :	<u>Western Blot: 1/500 - 1/2000. ELISA: 1/40000. Not yet tested in other applications.</u>
Purification :	<u>The antibody was affinity-purified from rabbit antiserum by affinity-chromatography using epitope-specific immunogen.</u>
Concentration :	<u>1 mg/ml</u>
Storage_stability	<u>-20°C/1 year</u>
:	<u></u>
Msds :	<u>MSDS_Antibody.pdf</u>
Other_name :	<u>NSF; Vesicle-fusing ATPase; N-ethylmaleimide-sensitive fusion protein; NEM-sensitive</u>

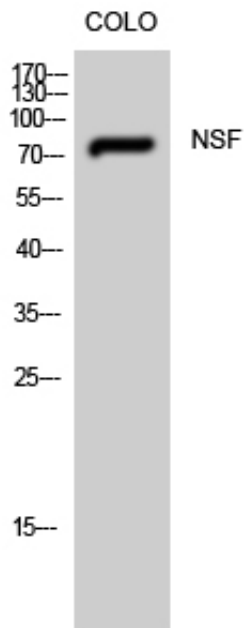


fusion protein; Vesicular-fusion protein NSF

Molecular
Weight :

75KD

Product Images



Western Blot analysis of CoLo cells using NSF Polyclonal Antibody