

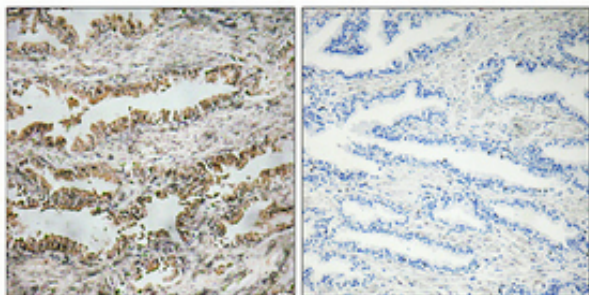
NT-4 Polyclonal Antibody

Catalog_no :	<u>AT3197</u>
Applications :	<u>IHC-p,ELISA</u>
Reactivity :	<u>Human,Mouse,Rat</u>
Category :	<u>抗原抗体</u>
Size :	<u>100µg/50µg/20µg</u>
Gene_name :	<u>NTF4</u>
Protein_name :	<u>Neurotrophin-4</u>
Humangene_id	<u>4909</u>
:	<u></u>
Humanswissprot	<u>P34130</u>
_no :	<u></u>
Mousegene_id :	<u>78405</u>
Mouseswissprot	<u>Q80VU4</u>
_no :	<u></u>
Ratgene_id :	<u>25730</u>
Ratswissprot_no	<u>P34131</u>
:	<u></u>
Immunogen :	<u>The antiserum was produced against synthesized peptide derived from human NT-4. AA range:71-120</u>
Specificity :	<u>NT-4 Polyclonal Antibody detects endogenous levels of NT-4 protein.</u>
Formulation :	<u>Liquid in PBS containing 50% glycerol, 0.5% BSA and 0.02% sodium azide.</u>
Source :	<u>Rabbit</u>
Dilution :	<u>Immunohistochemistry: 1/100 - 1/300. ELISA: 1/10000. Not yet tested in other applications.</u>
Purification :	<u>The antibody was affinity-purified from rabbit antiserum by affinity-chromatography using epitope-specific immunogen.</u>
Concentration :	<u>1 mg/ml</u>
Storage_stability	<u>-20°C/1 year</u>
:	<u></u>
Msds :	<u>MSDS_Antibody.pdf</u>



Other_name : NTF4; NTF5; Neurotrophin-4; NT-4; Neurotrophin-5; NT-5; Neutrophic factor 4

Product Images



Immunohistochemical analysis of paraffin-embedded Human prostate cancer. Antibody was diluted at 1:100(4°,overnight). High-pressure and temperature Tris-EDTA,pH8.0 was used for antigen retrieval. Negative contrl (right) obtaned from antibody was pre-absorbed by immunogen peptide.