



NTF2 Polyclonal Antibody

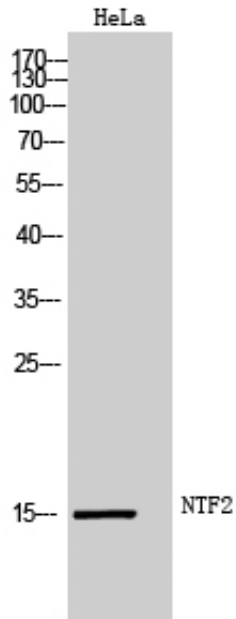
Catalog_no :	AT3201
Applications :	WB,IHC-p,ELISA
Reactivity :	Human,Mouse,Rat
Category :	抗原抗体
Size :	100µg/50µg/20µg
Gene_name :	NUTF2
Protein_name :	Nuclear transport factor 2
Humangene_id	10204
:	
Humanswissprot	P61970
_no :	
Mousegene_id :	621832
Mouseswissprot	P61971
_no :	
Ratgene_id :	291981
Ratswissprot_no	P61972
:	
Immunogen :	The antiserum was produced against synthesized peptide derived from human NUTF2. AA range:67-116
Specificity :	NTF2 Polyclonal Antibody detects endogenous levels of NTF2 protein.
Formulation :	Liquid in PBS containing 50% glycerol, 0.5% BSA and 0.02% sodium azide.
Source :	Rabbit
Dilution :	Western Blot: 1/500 - 1/2000. Immunohistochemistry: 1/100 - 1/300. ELISA: 1/20000. Not yet tested in other applications.
Purification :	The antibody was affinity-purified from rabbit antiserum by affinity-chromatography using epitope-specific immunogen.
Concentration :	1 mg/ml
Storage_stability	-20°C/1 year
:	
Msds :	MSDS_Antibody.pdf



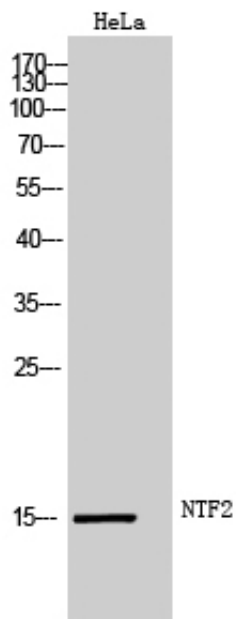
Other_name : NUTF2; NTF2; Nuclear transport factor 2; NTF-2; Placental protein 15; PP15

Molecular Weight : 15KD

Product Images



Western Blot analysis of HeLa cells using NTF2 Polyclonal Antibody



Western Blot analysis of HeLa cells using NTF2 Polyclonal Antibody