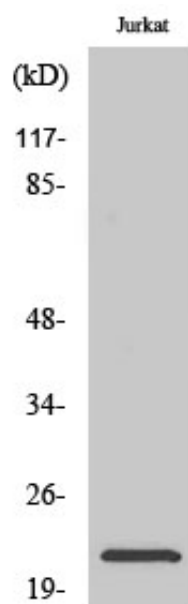


NTPase Polyclonal Antibody

Catalog_no :	AT3202
Applications :	WB,IHC-p,ELISA
Reactivity :	Human
Category :	抗原抗体
Size :	100µg/50µg/20µg
Gene_name :	NTPCR
Protein_name :	Cancer-related nucleoside-triphosphatase
Humangene_id :	84284
Humanswissprot_no :	Q9BSD7
Immunogen :	The antiserum was produced against synthesized peptide derived from human C1orf57. AA range:141-190
Specificity :	NTPase Polyclonal Antibody detects endogenous levels of NTPase protein.
Formulation :	Liquid in PBS containing 50% glycerol, 0.5% BSA and 0.02% sodium azide.
Source :	Rabbit
Dilution :	Western Blot: 1/500 - 1/2000. Immunohistochemistry: 1/100 - 1/300. ELISA: 1/40000. Not yet tested in other applications.
Purification :	The antibody was affinity-purified from rabbit antiserum by affinity-chromatography using epitope-specific immunogen.
Concentration :	1 mg/ml
Storage_stability :	-20°C/1 year
Msds :	MSDS_Antibody.pdf
Other_name :	NTPCR; C1orf57; Cancer-related nucleoside-triphosphatase; NTPase; Nucleoside triphosphate phosphohydrolase
Molecular Weight :	21KD

Product Images



Western Blot analysis of various cells using NTPase Polyclonal Antibody