

## NUB1 Polyclonal Antibody

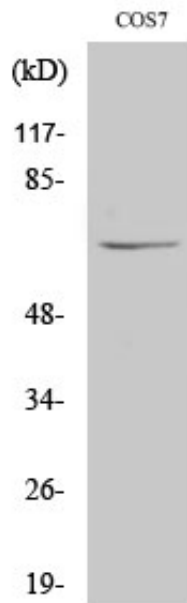
Catalog_no :	AT3206
Applications :	WB,IHC-p,ELISA
Reactivity :	Human,Mouse,Monkey
Category :	抗原抗体
Size :	100µg/50µg/20µg
Gene_name :	NUB1
Protein_name :	NEDD8 ultimate buster 1
Humangene_id :	<a href="#">51667</a>
Humanswissprot_no :	<a href="#">Q9Y5A7</a>
Mousegene_id :	<a href="#">53312</a>
Mouseswissprot_no :	<a href="#">P54729</a>
Immunogen :	The antiserum was produced against synthesized peptide derived from human NYREN18. AA range:566-615
Specificity :	NUB1 Polyclonal Antibody detects endogenous levels of NUB1 protein.
Formulation :	Liquid in PBS containing 50% glycerol, 0.5% BSA and 0.02% sodium azide.
Source :	Rabbit
Dilution :	Western Blot: 1/500 - 1/2000. Immunohistochemistry: 1/100 - 1/300. ELISA: 1/20000. Not yet tested in other applications.
Purification :	The antibody was affinity-purified from rabbit antiserum by affinity-chromatography using epitope-specific immunogen.
Concentration :	1 mg/ml
Storage_stability :	-20°C/1 year
Msds :	<a href="#">MSDS_Antibody.pdf</a>
Other_name :	NUB1; NYREN18; NEDD8 ultimate buster 1; Negative regulator of ubiquitin-like proteins 1; Renal carcinoma antigen NY-REN-18
Molecular	70KD



Weight :

---

## Product Images



Western Blot analysis of various cells using NUB1 Polyclonal Antibody diluted at 1 : 2000 cells nucleus extracted by Minute TM Cytoplasmic and Nuclear Fractionation kit (SC-003, Invent biotech, MN, USA).