

NUDC Polyclonal Antibody

Catalog_no :	AT3209
Applications :	WB,IHC-p,ELISA
Reactivity :	Human,Mouse,Rat
Category :	抗原抗体
Size :	100µg/50µg/20µg
Gene_name :	NUDC
Protein_name :	Nuclear migration protein nudC
Humangene_id :	10726
Humanswissprot_no :	Q9Y266
Mousegene_id :	18221
Mouseswissprot_no :	O35685
Ratgene_id :	29648
Ratswissprot_no :	Q63525
Immunogen :	The antiserum was produced against synthesized peptide derived from human NudC. AA range:282-331
Specificity :	NUDC Polyclonal Antibody detects endogenous levels of NUDC protein.
Formulation :	Liquid in PBS containing 50% glycerol, 0.5% BSA and 0.02% sodium azide.
Source :	Rabbit
Dilution :	Western Blot: 1/500 - 1/2000. Immunohistochemistry: 1/100 - 1/300. ELISA: 1/10000. Not yet tested in other applications.
Purification :	The antibody was affinity-purified from rabbit antiserum by affinity-chromatography using epitope-specific immunogen.
Concentration :	1 mg/ml
Storage_stability :	-20°C/1 year
Msds :	MSDS_Antibody.pdf

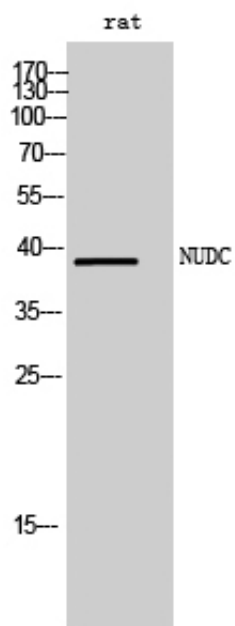


Other_name : NUDC; Nuclear migration protein nudC; Nuclear distribution protein C homolog

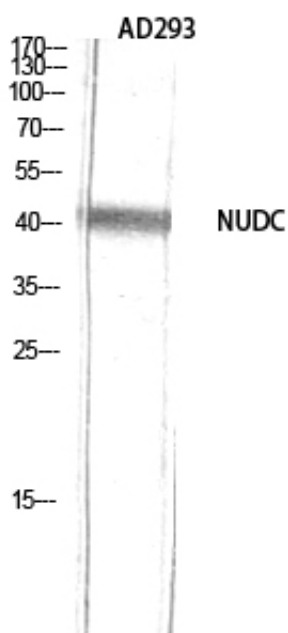
Molecular Weight : 38KD

Weight : _____

Product Images



Western Blot analysis of rat cells using NUDC Polyclonal Antibody diluted at 1 : 2000



Western Blot analysis of AD293 using NUDC Polyclonal Antibody diluted at 1 : 2000