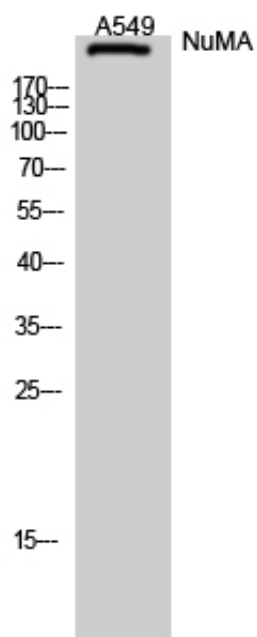


## NuMA Polyclonal Antibody

Catalog_no :	AT3210
Applications :	WB,IHC-p,ELISA
Reactivity :	Human
Category :	抗原抗体
Size :	100µg/50µg/20µg
Gene_name :	NUMA1
Protein_name :	Nuclear mitotic apparatus protein 1
Humangene_id	<a href="#">4926</a>
:	
Humanswissprot	<a href="#">Q14980</a>
_no :	
Immunogen :	The antiserum was produced against synthesized peptide derived from human NUMA1. AA range:334-383
Specificity :	NuMA Polyclonal Antibody detects endogenous levels of NuMA protein.
Formulation :	Liquid in PBS containing 50% glycerol, 0.5% BSA and 0.02% sodium azide.
Source :	Rabbit
Dilution :	Western Blot: 1/500 - 1/2000. Immunohistochemistry: 1/100 - 1/300. ELISA: 1/5000. Not yet tested in other applications.
Purification :	The antibody was affinity-purified from rabbit antiserum by affinity-chromatography using epitope-specific immunogen.
Concentration :	1 mg/ml
Storage_stability	-20°C/1 year
:	
Msds :	MSDS_Antibody.pdf
Other_name :	NUMA1; NUMA; Nuclear mitotic apparatus protein 1; NuMA protein; SP-H antigen
Molecular Weight :	240KD

## Product Images



Western Blot analysis of A549 cells using NuMA Polyclonal Antibody diluted at 1 : 2000