

## Nup160 Polyclonal Antibody

Catalog_no :	AT3211
Applications :	WB,ELISA
Reactivity :	Human,Mouse
Category :	抗原抗体
Size :	100µg/50µg/20µg
Gene_name :	NUP160
Protein_name :	Nuclear pore complex protein Nup160
Humangene_id :	<a href="#">23279</a>
Humanswissprot_no :	<a href="#">Q12769</a>
Mousegene_id :	<a href="#">59015</a>
Mouseswissprot_no :	<a href="#">Q9Z0W3</a>
Immunogen :	The antiserum was produced against synthesized peptide derived from human NUP160. AA range:392-441
Specificity :	Nup160 Polyclonal Antibody detects endogenous levels of Nup160 protein.
Formulation :	Liquid in PBS containing 50% glycerol, 0.5% BSA and 0.02% sodium azide.
Source :	Rabbit
Dilution :	Western Blot: 1/500 - 1/2000. ELISA: 1/20000. Not yet tested in other applications.
Purification :	The antibody was affinity-purified from rabbit antiserum by affinity-chromatography using epitope-specific immunogen.
Concentration :	1 mg/ml
Storage_stability :	-20°C/1 year
Msds :	MSDS_Antibody.pdf
Other_name :	NUP160; KIAA0197; NUP120; Nuclear pore complex protein Nup160; 160 kDa nucleoporin; Nucleoporin Nup160
Molecular Weight :	140KD

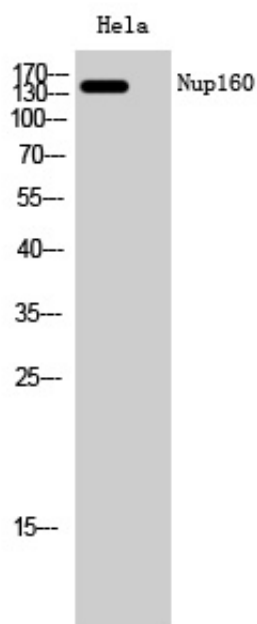


**专注二抗产品**

Biodragon旗下品牌

---

## Product Images



Western Blot analysis of HeLa cells using Nup160 Polyclonal Antibody diluted at 1 : 2000 cells nucleus extracted by Minute TM Cytoplasmic and Nuclear Fractionation kit (SC-003, Invent biotech, MN, USA).