

## NY-CO-1 Polyclonal Antibody

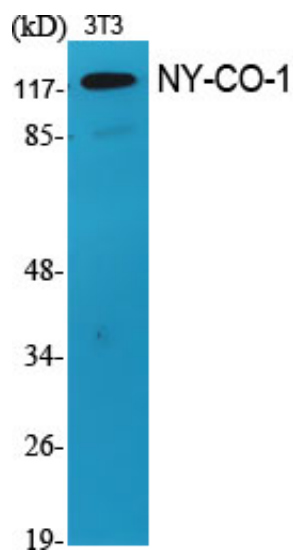
Catalog_no :	<u>AT3215</u>
Applications :	<u>WB,IHC-p,ELISA</u>
Reactivity :	<u>Human,Mouse,Rat</u>
Category :	<u>抗原抗体</u>
Size :	<u>100µg/50µg/20µg</u>
Gene_name :	<u>NEMF</u>
Protein_name :	<u>Nuclear export mediator factor NEMF</u>
Humangene_id :	<u><a href="#">9147</a></u>
Humanswissprot_no :	<u><a href="#">O60524</a></u>
Mousegene_id :	<u><a href="#">66244</a></u>
Mouseswissprot_no :	<u><a href="#">Q8CCP0</a></u>
Immunogen :	<u>The antiserum was produced against synthesized peptide derived from human SDCG1. AA range:881-930</u>
Specificity :	<u>NY-CO-1 Polyclonal Antibody detects endogenous levels of NY-CO-1 protein.</u>
Formulation :	<u>Liquid in PBS containing 50% glycerol, 0.5% BSA and 0.02% sodium azide.</u>
Source :	<u>Rabbit</u>
Dilution :	<u>Western Blot: 1/500 - 1/2000. Immunohistochemistry: 1/100 - 1/300. ELISA: 1/20000. Not yet tested in other applications.</u>
Purification :	<u>The antibody was affinity-purified from rabbit antiserum by affinity-chromatography using epitope-specific immunogen.</u>
Concentration :	<u>1 mg/ml</u>
Storage_stability :	<u>-20°C/1 year</u>
Msds :	<u><a href="#">MSDS_Antibody.pdf</a></u>
Other_name :	<u>NEMF; SDCCAG1; Nuclear export mediator factor NEMF; Antigen NY-CO-1; Serologically defined colon cancer antigen 1</u>
Molecular	<u>123KD</u>



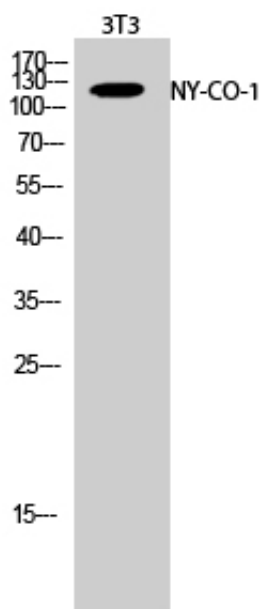
Weight :

---

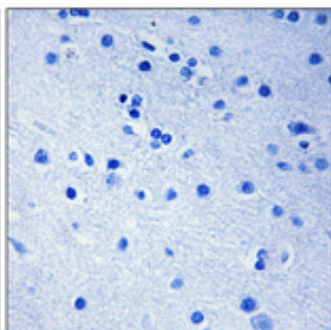
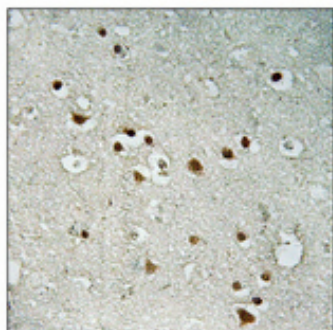
## Product Images



Western Blot analysis of various cells using NY-CO-1 Polyclonal Antibody



Western Blot analysis of 3T3 cells using NY-CO-1 Polyclonal Antibody



Immunohistochemical analysis of paraffin-embedded Human brain. Antibody was diluted at 1:100(4°, overnight). High-pressure and temperature Tris-EDTA, pH8.0 was used for antigen retrieval. Negative control (right) obtained from antibody was pre-absorbed by immunogen peptide.