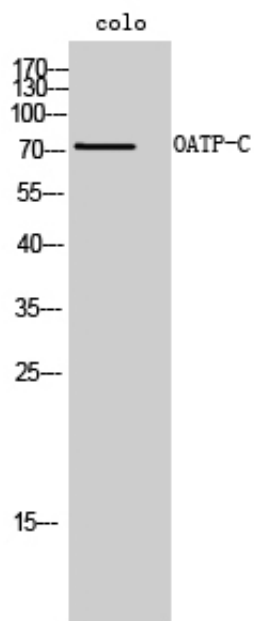


## OATP-C Polyclonal Antibody

Catalog_no :	AT3222
Applications :	WB,ELISA
Reactivity :	Human
Category :	抗原抗体
Size :	100µg/50µg/20µg
Gene_name :	SLCO1B1
Protein_name :	Solute carrier organic anion transporter family member 1B1
Humangene_id :	<a href="#">10599</a>
Humanswissprot_no :	<a href="#">Q9Y6L6</a>
Immunogen :	The antiserum was produced against synthesized peptide derived from human SLCO1B1. AA range:251-300
Specificity :	OATP-C Polyclonal Antibody detects endogenous levels of OATP-C protein.
Formulation :	Liquid in PBS containing 50% glycerol, 0.5% BSA and 0.02% sodium azide.
Source :	Rabbit
Dilution :	Western Blot: 1/500 - 1/2000. ELISA: 1/40000. Not yet tested in other applications.
Purification :	The antibody was affinity-purified from rabbit antiserum by affinity-chromatography using epitope-specific immunogen.
Concentration :	1 mg/ml
Storage_stability :	-20°C/1 year
Msds :	MSDS_Antibody.pdf
Other_name :	SLCO1B1; LST1; OATP1B1; OATP2; OATPC; SLC21A6; Solute carrier organic anion transporter family member 1B1; Liver-specific organic anion transporter 1; LST-1; OATP-C; Sodium-independent organic anion-transporting polypeptide 2; OATP-2; Solut
Molecular Weight :	76KD

## Product Images



Western Blot analysis of colo cells using OATP-C Polyclonal Antibody