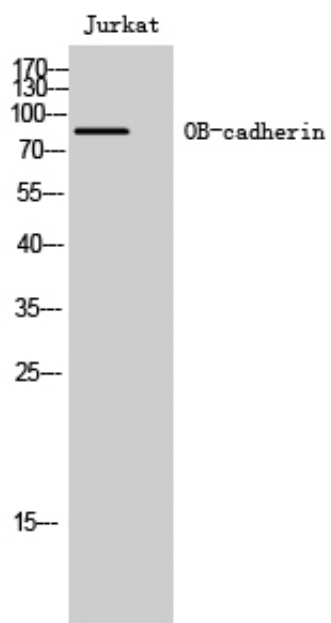




OB-cadherin Polyclonal Antibody

Catalog_no :	AT3224
Applications :	WB,ELISA
Reactivity :	Human,Mouse
Category :	抗原抗体
Size :	100µg/50µg/20µg
Gene_name :	CDH11
Protein_name :	Cadherin-11
Humangene_id :	1009
Humanswissprot_no :	P55287
Mousegene_id :	12552
Mouseswissprot_no :	P55288
Immunogen :	The antiserum was produced against synthesized peptide derived from human CDH11. AA range:421-470
Specificity :	OB-cadherin Polyclonal Antibody detects endogenous levels of OB-cadherin protein.
Formulation :	Liquid in PBS containing 50% glycerol, 0.5% BSA and 0.02% sodium azide.
Source :	Rabbit
Dilution :	Western Blot: 1/500 - 1/2000. ELISA: 1/20000. Not yet tested in other applications.
Purification :	The antibody was affinity-purified from rabbit antiserum by affinity-chromatography using epitope-specific immunogen.
Concentration :	1 mg/ml
Storage_stability :	-20°C/1 year
Msdn :	MSDS_Antibody.pdf
Other_name :	CDH11; Cadherin-11; OSF-4; Osteoblast cadherin; OB-cadherin
Molecular Weight :	85KD

Product Images



Western Blot analysis of Jurkat cells using OB-cadherin Polyclonal Antibody