

OBCAM Polyclonal Antibody

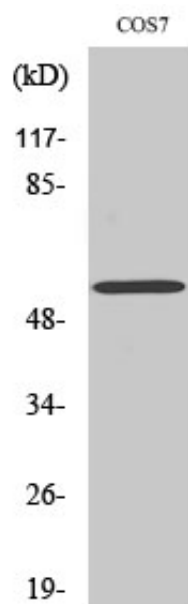
Catalog_no :	AT3225
Applications :	WB,ELISA
Reactivity :	Human,Mouse,Rat,Monkey
Category :	抗原抗体
Size :	100µg/50µg/20µg
Gene_name :	OPCML
Protein_name :	Opioid-binding protein/cell adhesion molecule
Humangene_id :	4978
Humanswissprot_no :	Q14982
Ratgene_id :	116597
Ratswissprot_no :	P32736
Immunogen :	The antiserum was produced against synthesized peptide derived from human OBCAM. AA range:152-201
Specificity :	OBCAM Polyclonal Antibody detects endogenous levels of OBCAM protein.
Formulation :	Liquid in PBS containing 50% glycerol, 0.5% BSA and 0.02% sodium azide.
Source :	Rabbit
Dilution :	Western Blot: 1/500 - 1/2000. ELISA: 1/10000. Not yet tested in other applications.
Purification :	The antibody was affinity-purified from rabbit antiserum by affinity-chromatography using epitope-specific immunogen.
Concentration :	1 mg/ml
Storage_stability :	-20°C/1 year
Msds :	MSDS_Antibody.pdf
Other_name :	OPCML; IGLON1; OBCAM; Opioid-binding protein/cell adhesion molecule; OBCAM; OPCML; Opioid-binding cell adhesion molecule; IgLON family member 1
Molecular Weight :	58KD



专注二抗产品

Biodragon旗下品牌

Product Images



Western Blot analysis of various cells using OBCAM Polyclonal Antibody diluted at 1 : 1000