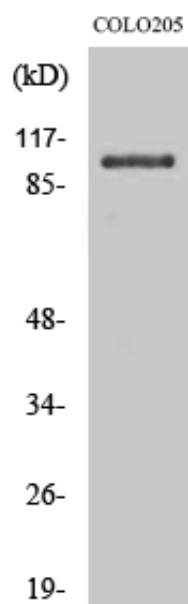




OCRL Polyclonal Antibody

Catalog_no :	AT3228
Applications :	WB,ELISA
Reactivity :	Human,Mouse
Category :	抗原抗体
Size :	100µg/50µg/20µg
Gene_name :	OCRL
Protein_name :	Inositol polyphosphate 5-phosphatase OCRL-1
Humangene_id :	4952
Humanswissprot_no :	Q01968
Immunogen :	The antiserum was produced against synthesized peptide derived from human OCRL. AA range:150-199
Specificity :	OCRL Polyclonal Antibody detects endogenous levels of OCRL protein.
Formulation :	Liquid in PBS containing 50% glycerol, 0.5% BSA and 0.02% sodium azide.
Source :	Rabbit
Dilution :	Western Blot: 1/500 - 1/2000. ELISA: 1/10000. Not yet tested in other applications.
Purification :	The antibody was affinity-purified from rabbit antiserum by affinity-chromatography using epitope-specific immunogen.
Concentration :	1 mg/ml
Storage_stability :	-20°C/1 year
Msds :	MSDS_Antibody.pdf
Other_name :	OCRL; INPP5F; OCRL1; Inositol polyphosphate 5-phosphatase OCRL-1; Lowe oculocerebrorenal syndrome protein
Molecular Weight :	104KD

Product Images



Western Blot analysis of various cells using OCRL Polyclonal Antibody