

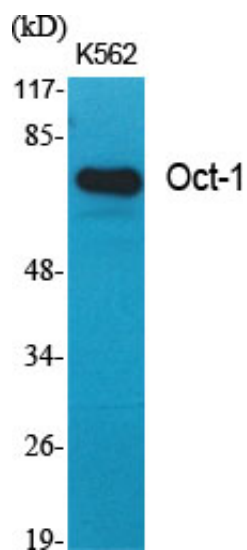
Oct-1 Polyclonal Antibody

Catalog_no :	AT3230
Applications :	WB,IHC-p,ELISA
Reactivity :	Human,Mouse
Category :	抗原抗体
Size :	100µg/50µg/20µg
Gene_name :	POU2F1
Protein_name :	POU domain class 2 transcription factor 1
Humangene_id :	5451
Humanswissprot_no :	P14859
Mousegene_id :	18986
Mouseswissprot_no :	P25425
Immunogen :	The antiserum was produced against synthesized peptide derived from human OCT1. AA range:41-90
Specificity :	Oct-1 Polyclonal Antibody detects endogenous levels of 40817 protein.
Formulation :	Liquid in PBS containing 50% glycerol, 0.5% BSA and 0.02% sodium azide.
Source :	Rabbit
Dilution :	Western Blot: 1/500 - 1/2000. Immunohistochemistry: 1/100 - 1/300. ELISA: 1/5000. Not yet tested in other applications.
Purification :	The antibody was affinity-purified from rabbit antiserum by affinity-chromatography using epitope-specific immunogen.
Concentration :	1 mg/ml
Storage_stability :	-20°C/1 year
Msds :	MSDS_Antibody.pdf
Other_name :	POU2F1; OCT1; OTF1; POU domain; class 2, transcription factor 1; NF-A1; Octamer-binding protein 1; Oct-1; Octamer-binding transcription factor 1; OTF-1
Molecular	76KD



Weight :

Product Images



Western Blot analysis of various cells using Oct-1 Polyclonal Antibody diluted at 1 : 1000 cells nucleus extracted by Minute TM Cytoplasmic and Nuclear Fractionation kit (SC-003, Inventbiotech, MN, USA).



Western Blot analysis of HeLa cells using Oct-1 Polyclonal Antibody diluted at 1 : 1000 cells nucleus extracted by Minute TM Cytoplasmic and Nuclear Fractionation kit (SC-003, Inventbiotech, MN, USA).