

ODC Polyclonal Antibody

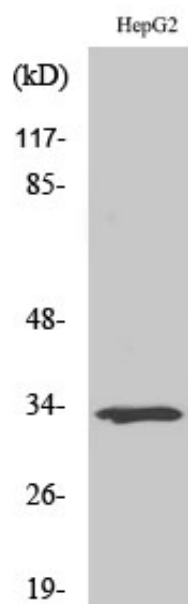
Catalog_no :	AT3236
Applications :	WB,IHC-p,ELISA
Reactivity :	Human,Mouse,Rat
Category :	抗原抗体
Size :	100µg/50µg/20µg
Gene_name :	SLC25A21
Protein_name :	Mitochondrial 2-oxodicarboxylate carrier
Humangene_id :	89874
Humanswissprot_no :	Q9BQT8
Mousegene_id :	217593
Mouseswissprot_no :	Q8BZ09
Ratgene_id :	171151
Ratswissprot_no :	Q99JD3
Immunogen :	The antiserum was produced against synthesized peptide derived from human SLC25A21. AA range:134-183
Specificity :	ODC Polyclonal Antibody detects endogenous levels of ODC protein.
Formulation :	Liquid in PBS containing 50% glycerol, 0.5% BSA and 0.02% sodium azide.
Source :	Rabbit
Dilution :	Western Blot: 1/500 - 1/2000. Immunohistochemistry: 1/100 - 1/300. ELISA: 1/40000. Not yet tested in other applications.
Purification :	The antibody was affinity-purified from rabbit antiserum by affinity-chromatography using epitope-specific immunogen.
Concentration :	1 mg/ml
Storage_stability :	-20°C/1 year
Msds :	MSDS_Antibody.pdf



Other_name : SLC25A21; ODC; Mitochondrial 2-oxodicarboxylate carrier; Solute carrier family 25 member 21

Molecular Weight : 36KD

Product Images



Western Blot analysis of various cells using ODC Polyclonal Antibody