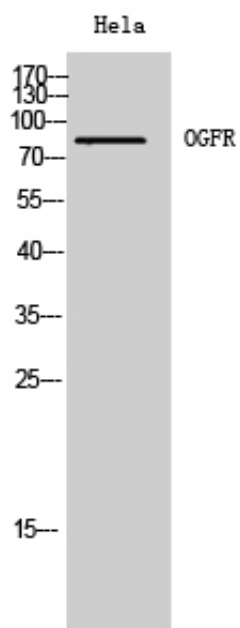


## OGFR Polyclonal Antibody

Catalog_no :	AT3240
Applications :	WB,ELISA
Reactivity :	Human
Category :	抗原抗体
Size :	100µg/50µg/20µg
Gene_name :	OGFR
Protein_name :	Opioid growth factor receptor
Humangene_id :	<a href="#">11054</a>
Humanswissprot_no :	<a href="#">Q9NZT2</a>
Immunogen :	The antiserum was produced against synthesized peptide derived from human OGFR. AA range:138-187
Specificity :	OGFR Polyclonal Antibody detects endogenous levels of OGFR protein.
Formulation :	Liquid in PBS containing 50% glycerol, 0.5% BSA and 0.02% sodium azide.
Source :	Rabbit
Dilution :	Western Blot: 1/500 - 1/2000. ELISA: 1/20000. Not yet tested in other applications.
Purification :	The antibody was affinity-purified from rabbit antiserum by affinity-chromatography using epitope-specific immunogen.
Concentration :	1 mg/ml
Storage_stability :	-20°C/1 year
Msds :	<a href="#">MSDS_Antibody.pdf</a>
Other_name :	OGFR; Opioid growth factor receptor; OGFr; Protein 7-60; Zeta-type opioid receptor
Molecular Weight :	80KD

## Product Images



Western Blot analysis of HeLa cells using OGFR Polyclonal Antibody