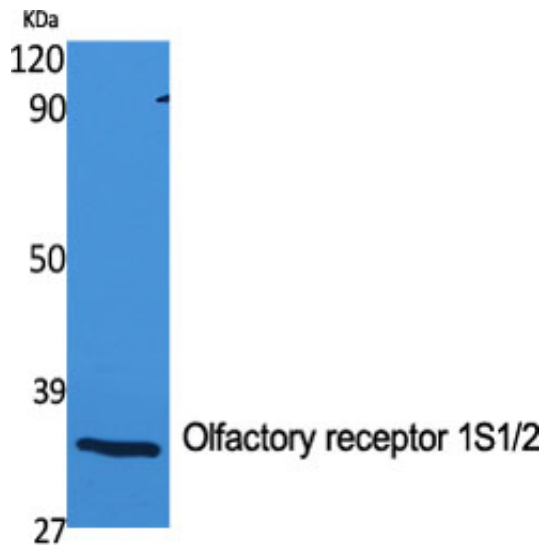


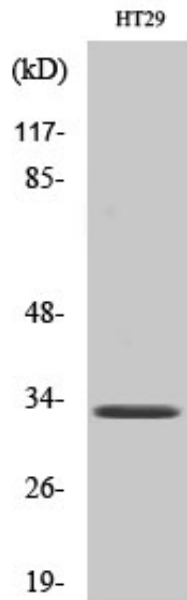
Olfactory receptor 1S1/2 Polyclonal Antibody

Catalog_no :	AT3287
Applications :	WB,IF,ELISA
Reactivity :	Human
Category :	抗原抗体
Size :	100µg/50µg/20µg
Gene_name :	OR1S1/OR1S2
Protein_name :	Olfactory receptor 1S1/2
Humangene_id :	219958/219959
Humanswissprot_no :	Q8NGQ3/Q8NH92
Immunogen :	The antiserum was produced against synthesized peptide derived from human OR1S1/1S2. AA range:241-290
Specificity :	Olfactory receptor 1S1/2 Polyclonal Antibody detects endogenous levels of Olfactory receptor 1S1/2 protein.
Formulation :	Liquid in PBS containing 50% glycerol, 0.5% BSA and 0.02% sodium azide.
Source :	Rabbit
Dilution :	Western Blot: 1/500 - 1/2000. Immunofluorescence: 1/200 - 1/1000. ELISA: 1/20000. Not yet tested in other applications.
Purification :	The antibody was affinity-purified from rabbit antiserum by affinity-chromatography using epitope-specific immunogen.
Concentration :	1 mg/ml
Storage_stability :	-20°C/1 year
Msds :	MSDS_Antibody.pdf
Other_name :	OR1S2; Olfactory receptor 1S2; Olfactory receptor OR11-231; OR1S1; Olfactory receptor 1S1; Olfactory receptor OR11-232
Molecular Weight :	33KD

Product Images



Western Blot analysis of various cells using Olfactory receptor 1S1/2 Polyclonal Antibody



Western Blot analysis of HuvEc cells using Olfactory receptor 1S1/2 Polyclonal Antibody