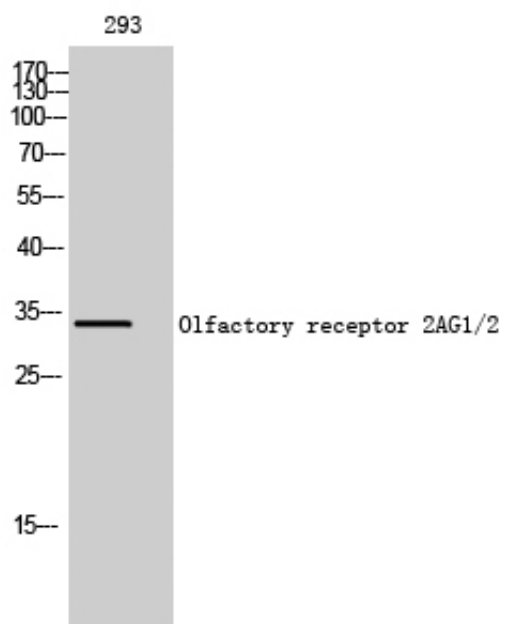


Olfactory receptor 2AG1/2 Polyclonal Antibody

Catalog_no :	AT3293
Applications :	WB,IF,ELISA
Reactivity :	Human
Category :	抗原抗体
Size :	100µg/50µg/20µg
Gene_name :	OR2AG1/2
Protein_name :	Olfactory receptor 2AG1/2
Humangene_id :	144125/338755
Humanswissprot_no :	A6NM03/Q9H205
Immunogen :	The antiserum was produced against synthesized peptide derived from human OR2AG1/2AG2. AA range:61-110
Specificity :	Olfactory receptor 2AG1/2 Polyclonal Antibody detects endogenous levels of Olfactory receptor 2AG1/2 protein.
Formulation :	Liquid in PBS containing 50% glycerol, 0.5% BSA and 0.02% sodium azide.
Source :	Rabbit
Dilution :	Western Blot: 1/500 - 1/2000. Immunofluorescence: 1/200 - 1/1000. ELISA: 1/5000. Not yet tested in other applications.
Purification :	The antibody was affinity-purified from rabbit antiserum by affinity-chromatography using epitope-specific immunogen.
Concentration :	1 mg/ml
Storage_stability :	-20°C/1 year
Msds :	MSDS_Antibody.pdf
Other_name :	OR2AG2; OR2AG2P; Olfactory receptor 2AG2; OR2AG1; OR2AG3; Olfactory receptor 2AG1; HT3; Olfactory receptor 2AG3; Olfactory receptor OR11-79
Molecular Weight :	34KD

Product Images



Western Blot analysis of 293 cells using Olfactory receptor 2AG1/2 Polyclonal Antibody diluted at 1 : 500