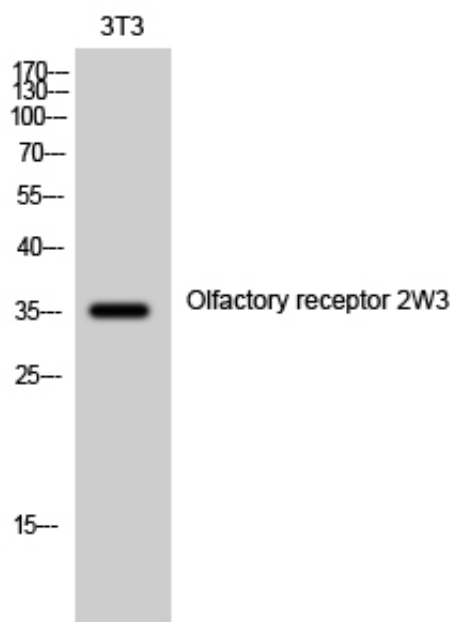




## Olfactory receptor 2W3 Polyclonal Antibody

Catalog_no :	AT3325
Applications :	WB,ELISA
Reactivity :	Human
Category :	抗原抗体
Size :	100µg/50µg/20µg
Gene_name :	OR2W3
Protein_name :	Olfactory receptor 2W3
Humangene_id :	<a href="#">343171</a>
Humanswissprot_no :	<a href="#">Q7Z3T1</a>
Immunogen :	The antiserum was produced against synthesized peptide derived from human OR2W3. AA range:141-190
Specificity :	Olfactory receptor 2W3 Polyclonal Antibody detects endogenous levels of Olfactory receptor 2W3 protein.
Formulation :	Liquid in PBS containing 50% glycerol, 0.5% BSA and 0.02% sodium azide.
Source :	Rabbit
Dilution :	Western Blot: 1/500 - 1/2000. ELISA: 1/10000. Not yet tested in other applications.
Purification :	The antibody was affinity-purified from rabbit antiserum by affinity-chromatography using epitope-specific immunogen.
Concentration :	1 mg/ml
Storage_stability :	-20°C/1 year
Msds :	MSDS_Antibody.pdf
Other_name :	OR2W3; OR2W3P; OR2W8P; Olfactory receptor 2W3; Olfactory receptor 2W8; Olfactory receptor OR1-49
Molecular Weight :	35KD

## Product Images



Western Blot analysis of 3T3 cells using Olfactory receptor 2W3 Polyclonal Antibody