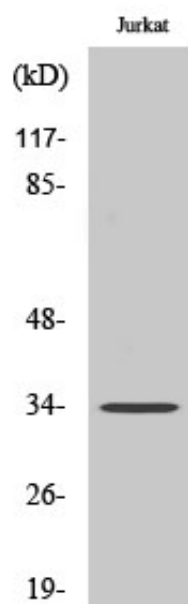


## Olfactory receptor 4C12 Polyclonal Antibody

Catalog_no :	AT3334
Applications :	WB,IF,ELISA
Reactivity :	Human
Category :	抗原抗体
Size :	100µg/50µg/20µg
Gene_name :	OR4C12
Protein_name :	Olfactory receptor 4C12
Humangene_id :	<a href="#">283093</a>
Humanswissprot_no :	<a href="#">Q96R67</a>
Immunogen :	The antiserum was produced against synthesized peptide derived from human OR4C12. AA range:260-309
Specificity :	Olfactory receptor 4C12 Polyclonal Antibody detects endogenous levels of Olfactory receptor 4C12 protein.
Formulation :	Liquid in PBS containing 50% glycerol, 0.5% BSA and 0.02% sodium azide.
Source :	Rabbit
Dilution :	Western Blot: 1/500 - 1/2000. Immunofluorescence: 1/200 - 1/1000. ELISA: 1/20000. Not yet tested in other applications.
Purification :	The antibody was affinity-purified from rabbit antiserum by affinity-chromatography using epitope-specific immunogen.
Concentration :	1 mg/ml
Storage_stability :	-20°C/1 year
Msds :	MSDS_Antibody.pdf
Other_name :	OR4C12; Olfactory receptor 4C12; Olfactory receptor OR11-259
Molecular Weight :	34KD

## Product Images



Western Blot analysis of various cells using Olfactory receptor 4C12 Polyclonal Antibody