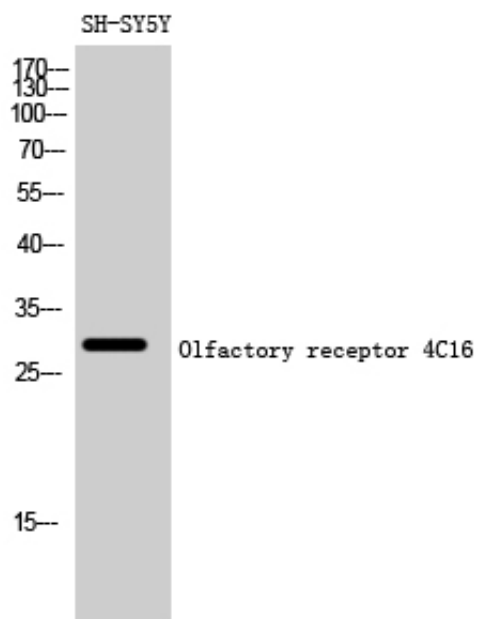


Olfactory receptor 4C16 Polyclonal Antibody

Catalog_no :	AT3337
Applications :	WB,IF,ELISA
Reactivity :	Human
Category :	抗原抗体
Size :	100µg/50µg/20µg
Gene_name :	OR4C16
Protein_name :	Olfactory receptor 4C16
Humangene_id :	219428
Humanswissprot_no :	Q8NGL9
Immunogen :	The antiserum was produced against synthesized peptide derived from human OR4C16. AA range:261-310
Specificity :	Olfactory receptor 4C16 Polyclonal Antibody detects endogenous levels of Olfactory receptor 4C16 protein.
Formulation :	Liquid in PBS containing 50% glycerol, 0.5% BSA and 0.02% sodium azide.
Source :	Rabbit
Dilution :	Western Blot: 1/500 - 1/2000. Immunofluorescence: 1/200 - 1/1000. ELISA: 1/20000. Not yet tested in other applications.
Purification :	The antibody was affinity-purified from rabbit antiserum by affinity-chromatography using epitope-specific immunogen.
Concentration :	1 mg/ml
Storage_stability :	-20°C/1 year
Msds :	MSDS_Antibody.pdf
Other_name :	OR4C16; Olfactory receptor 4C16; Olfactory receptor OR11-135
Molecular Weight :	35KD

Product Images



Western Blot analysis of SH-SY5Y cells using Olfactory receptor 4C16 Polyclonal Antibody diluted at 1 : 500