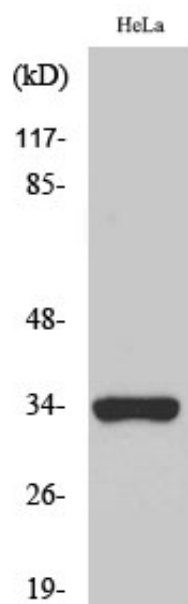




## Olfactory receptor 52W1 Polyclonal Antibody

Catalog_no :	AT3386
Applications :	WB,ELISA
Reactivity :	Human
Category :	抗原抗体
Size :	100µg/50µg/20µg
Gene_name :	OR52W1
Protein_name :	Olfactory receptor 52W1
Humangene_id :	<a href="#">120787</a>
Humanswissprot_no :	<a href="#">Q6IF63</a>
Immunogen :	The antiserum was produced against synthesized peptide derived from human OR52W1. AA range:271-320
Specificity :	Olfactory receptor 52W1 Polyclonal Antibody detects endogenous levels of Olfactory receptor 52W1 protein.
Formulation :	Liquid in PBS containing 50% glycerol, 0.5% BSA and 0.02% sodium azide.
Source :	Rabbit
Dilution :	Western Blot: 1/500 - 1/2000. ELISA: 1/5000. Not yet tested in other applications.
Purification :	The antibody was affinity-purified from rabbit antiserum by affinity-chromatography using epitope-specific immunogen.
Concentration :	1 mg/ml
Storage_stability :	-20°C/1 year
Msds :	MSDS_Antibody.pdf
Other_name :	OR52W1; OR52W1P; Olfactory receptor 52W1; Olfactory receptor OR11-71
Molecular Weight :	34KD

## Product Images



Western Blot analysis of various cells using Olfactory receptor 52W1 Polyclonal Antibody