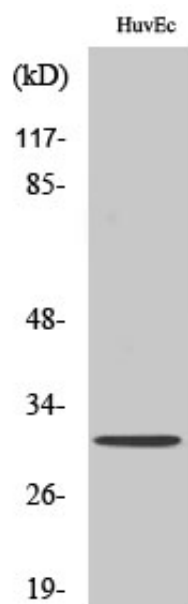




Olfactory receptor 6C68 Polyclonal Antibody

Catalog_no :	AT3426
Applications :	WB,ELISA
Reactivity :	Human
Category :	抗原抗体
Size :	100µg/50µg/20µg
Gene_name :	OR6C68
Protein_name :	Olfactory receptor 6C68
Humangene_id :	403284
Humanswissprot_no :	A6NDL8
Immunogen :	The antiserum was produced against synthesized peptide derived from human OR6C68. AA range:261-310
Specificity :	Olfactory receptor 6C68 Polyclonal Antibody detects endogenous levels of Olfactory receptor 6C68 protein.
Formulation :	Liquid in PBS containing 50% glycerol, 0.5% BSA and 0.02% sodium azide.
Source :	Rabbit
Dilution :	Western Blot: 1/500 - 1/2000. ELISA: 1/5000. Not yet tested in other applications.
Purification :	The antibody was affinity-purified from rabbit antiserum by affinity-chromatography using epitope-specific immunogen.
Concentration :	1 mg/ml
Storage_stability :	-20°C/1 year
Msds :	MSDS_Antibody.pdf
Other_name :	OR6C68; Olfactory receptor 6C68
Molecular Weight :	30KD

Product Images



Western Blot analysis of various cells using Olfactory receptor 6C68 Polyclonal Antibody