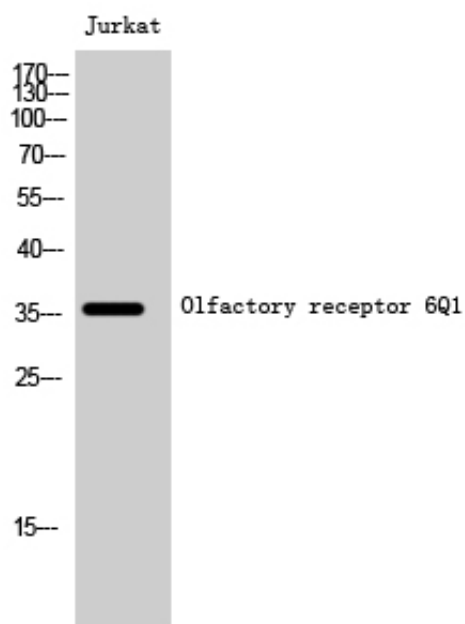


## Olfactory receptor 6Q1 Polyclonal Antibody

|                     |   |
|---------------------|---|
| Catalog_no :        | AT3431  |
| Applications :      | WB,IF,ELISA   |
| Reactivity :        | Human   |
| Category :          | 抗原抗体  |
| Size :              | 100µg/50µg/20µg   |
| Gene_name :         | OR6Q1   |
| Protein_name :      | Olfactory receptor 6Q1  |
| Humangene_id :      | <a href="#">219952</a>  |
| Humanswissprot_no : | <a href="#">Q8NGQ2</a>  |
| Immunogen :         | The antiserum was produced against synthesized peptide derived from human OR6Q1. AA range:23-72                         |
| Specificity :       | Olfactory receptor 6Q1 Polyclonal Antibody detects endogenous levels of Olfactory receptor 6Q1 protein.                 |
| Formulation :       | Liquid in PBS containing 50% glycerol, 0.5% BSA and 0.02% sodium azide.   |
| Source :            | Rabbit  |
| Dilution :          | Western Blot: 1/500 - 1/2000. Immunofluorescence: 1/200 - 1/1000. ELISA: 1/20000. Not yet tested in other applications. |
| Purification :      | The antibody was affinity-purified from rabbit antiserum by affinity-chromatography using epitope-specific immunogen.   |
| Concentration :     | 1 mg/ml   |
| Storage_stability : | -20°C/1 year  |
| Msds :              | MSDS_Antibody.pdf   |
| Other_name :        | OR6Q1; Olfactory receptor 6Q1; Olfactory receptor OR11-226  |
| Molecular Weight :  | 36KD  |

## Product Images



Western Blot analysis of Jurkat cells using Olfactory receptor 6Q1 Polyclonal Antibody diluted at 1 : 1000