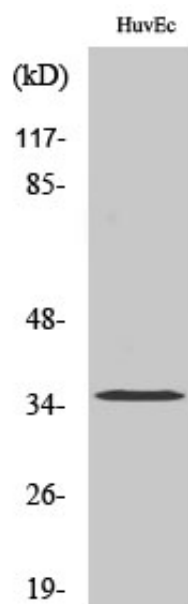


Olfactory receptor 7C2 Polyclonal Antibody

Catalog_no :	AT3436
Applications :	WB,ELISA
Reactivity :	Human
Category :	抗原抗体
Size :	100µg/50µg/20µg
Gene_name :	OR7C2
Protein_name :	Olfactory receptor 7C2
Humangene_id :	26658
Humanswissprot_no :	O60412
Immunogen :	The antiserum was produced against synthesized peptide derived from human OR7C2. AA range:198-247
Specificity :	Olfactory receptor 7C2 Polyclonal Antibody detects endogenous levels of Olfactory receptor 7C2 protein.
Formulation :	Liquid in PBS containing 50% glycerol, 0.5% BSA and 0.02% sodium azide.
Source :	Rabbit
Dilution :	Western Blot: 1/500 - 1/2000. ELISA: 1/10000. Not yet tested in other applications.
Purification :	The antibody was affinity-purified from rabbit antiserum by affinity-chromatography using epitope-specific immunogen.
Concentration :	1 mg/ml
Storage_stability :	-20°C/1 year
Msds :	MSDS_Antibody.pdf
Other_name :	OR7C2; OR7C3; Olfactory receptor 7C2; Olfactory receptor 19-18; OR19-18; Olfactory receptor 7C3; Olfactory receptor OR19-22
Molecular Weight :	35KD

Product Images



Western Blot analysis of various cells using Olfactory receptor 7C2 Polyclonal Antibody