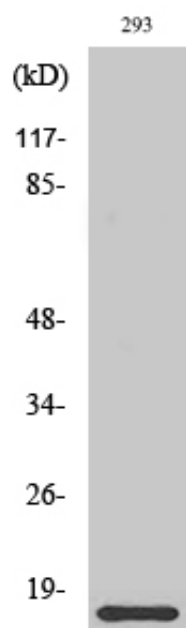


ORAOV1 Polyclonal Antibody

Catalog_no :	AT3468
Applications :	WB,IHC-p,IF,ELISA
Reactivity :	Human
Category :	抗原抗体
Size :	100µg/50µg/20µg
Gene_name :	ORAOV1
Protein_name :	Oral cancer-overexpressed protein 1
Humangene_id :	220064
Humanswissprot_no :	Q8WV07
Immunogen :	The antiserum was produced against synthesized peptide derived from human ORAV1. AA range:81-130
Specificity :	ORAOV1 Polyclonal Antibody detects endogenous levels of ORAOV1 protein.
Formulation :	Liquid in PBS containing 50% glycerol, 0.5% BSA and 0.02% sodium azide.
Source :	Rabbit
Dilution :	Western Blot: 1/500 - 1/2000. Immunohistochemistry: 1/100 - 1/300. Immunofluorescence: 1/200 - 1/1000. ELISA: 1/10000. Not yet tested in other applications.
Purification :	The antibody was affinity-purified from rabbit antiserum by affinity-chromatography using epitope-specific immunogen.
Concentration :	1 mg/ml
Storage_stability :	-20°C/1 year
Msds :	MSDS_Antibody.pdf
Other_name :	ORAOV1; TAOS1; Oral cancer-overexpressed protein 1; Tumor-amplified and overexpressed sequence 1
Molecular Weight :	15KD

Product Images



Western Blot analysis of various cells using ORAOV1 Polyclonal Antibody diluted at 1 : 2000