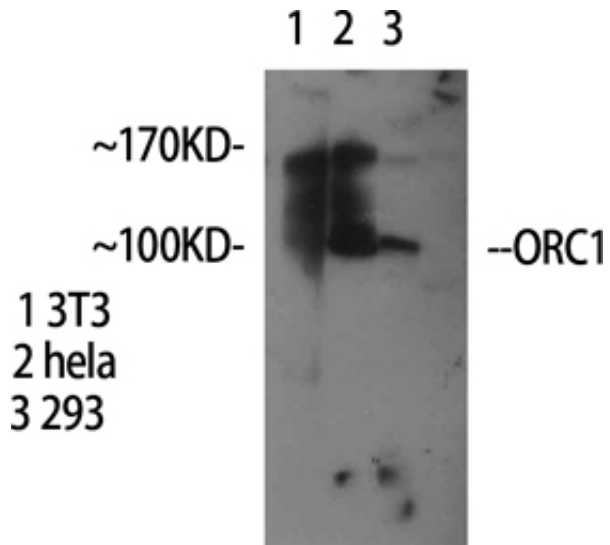


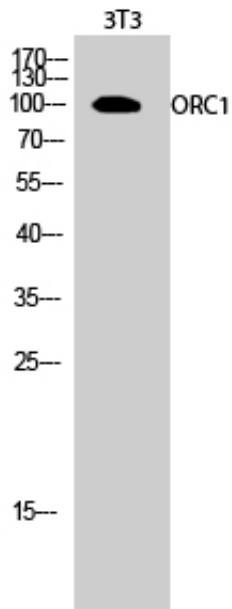
ORC1 Polyclonal Antibody

Catalog_no :	AT3469
Applications :	WB,ELISA
Reactivity :	Human
Category :	抗原抗体
Size :	100µg/50µg/20µg
Gene_name :	ORC1
Protein_name :	Origin recognition complex subunit 1
Humangene_id :	4998
Humanswissprot_no :	Q13415
Immunogen :	The antiserum was produced against synthesized peptide derived from human ORC1L. AA range:331-380
Specificity :	ORC1 Polyclonal Antibody detects endogenous levels of ORC1 protein.
Formulation :	Liquid in PBS containing 50% glycerol, 0.5% BSA and 0.02% sodium azide.
Source :	Rabbit
Dilution :	Western Blot: 1/500 - 1/2000. ELISA: 1/5000. Not yet tested in other applications.
Purification :	The antibody was affinity-purified from rabbit antiserum by affinity-chromatography using epitope-specific immunogen.
Concentration :	1 mg/ml
Storage_stability :	-20°C/1 year
Msds :	MSDS_Antibody.pdf
Other_name :	ORC1; ORC1L; PARC1; Origin recognition complex subunit 1; Replication control protein 1
Molecular Weight :	100KD,120KD

Product Images



Western Blot analysis of various cells using ORC1 Polyclonal Antibody



Western Blot analysis of 3T3 cells using ORC1 Polyclonal Antibody