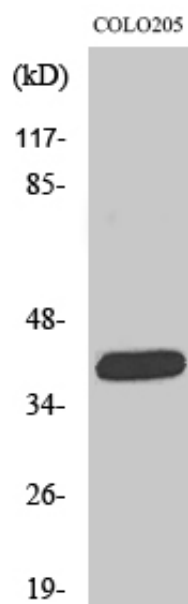


ORCTL2 Polyclonal Antibody

Catalog_no :	AT3470
Applications :	WB,IF,ELISA
Reactivity :	Human
Category :	抗原抗体
Size :	100µg/50µg/20µg
Gene_name :	SLC22A18
Protein_name :	Solute carrier family 22 member 18
Humangene_id :	5002
Humanswissprot_no :	Q96BI1
Immunogen :	The antiserum was produced against synthesized peptide derived from human ORCTL-2. AA range:359-408
Specificity :	ORCTL2 Polyclonal Antibody detects endogenous levels of ORCTL2 protein.
Formulation :	Liquid in PBS containing 50% glycerol, 0.5% BSA and 0.02% sodium azide.
Source :	Rabbit
Dilution :	Western Blot: 1/500 - 1/2000. Immunofluorescence: 1/200 - 1/1000. ELISA: 1/10000. Not yet tested in other applications.
Purification :	The antibody was affinity-purified from rabbit antiserum by affinity-chromatography using epitope-specific immunogen.
Concentration :	1 mg/ml
Storage_stability :	-20°C/1 year
Msds :	MSDS_Antibody.pdf
Other_name :	SLC22A18; BWR1A; BWSCR1A; HET; IMPT1; ITM; ORCTL2; SLC22A1L; TSSC5; Solute carrier family 22 member 18; Beckwith-Wiedemann syndrome chromosomal region 1 candidate gene A protein; Efflux transporter-like protein; Imprinted multi-membrane-spa
Molecular Weight :	43KD

Product Images



Western Blot analysis of various cells using ORCTL2 Polyclonal Antibody