

OSR2 Polyclonal Antibody

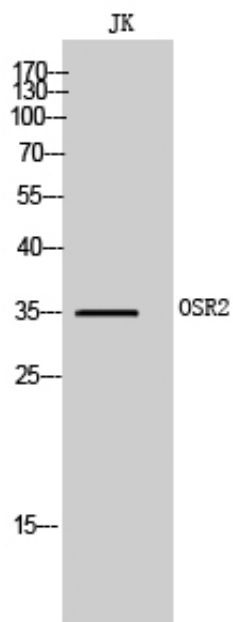
Catalog_no :	AT3474
Applications :	WB,ELISA
Reactivity :	Human,Mouse,Rat
Category :	抗原抗体
Size :	100µg/50µg/20µg
Gene_name :	OSR2
Protein_name :	Protein odd-skipped-related 2
Humangene_id :	116039
Humanswissprot_no :	Q8N2R0
Mousegene_id :	107587
Mouseswissprot_no :	Q91ZD1
Ratgene_id :	315039
Ratswissprot_no :	Q6AY34
Immunogen :	Synthesized peptide derived from OSR2 . at AA range: 60-140
Specificity :	OSR2 Polyclonal Antibody detects endogenous levels of OSR2 protein.
Formulation :	Liquid in PBS containing 50% glycerol, 0.5% BSA and 0.02% sodium azide.
Source :	Rabbit
Dilution :	Western Blot: 1/500 - 1/2000. ELISA: 1/40000. Not yet tested in other applications.
Purification :	The antibody was affinity-purified from rabbit antiserum by affinity-chromatography using epitope-specific immunogen.
Concentration :	1 mg/ml
Storage_stability :	-20°C/1 year
Msds :	MSDS_Antibody.pdf
Other_name :	OSR2; Protein odd-skipped-related 2



Molecular
Weight :

35KD

Product Images



Western Blot analysis of JK cells using OSR2 Polyclonal Antibody cells nucleus extracted by Minute TM Cytoplasmic and Nuclear Fractionation kit (SC-003, Inventbiotech, MN, USA).