

OTUB2 Polyclonal Antibody

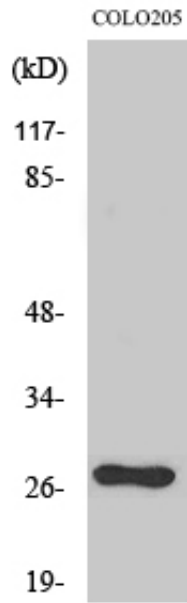
Catalog_no :	AT3475
Applications :	WB,IHC-p,ELISA
Reactivity :	Human,Mouse,Rat
Category :	抗原抗体
Size :	100µg/50µg/20µg
Gene_name :	OTUB2
Protein_name :	Ubiquitin thioesterase OTUB2
Humangene_id :	78990
Humanswissprot_no :	Q96DC9
Mousegene_id :	68149
Mouseswissprot_no :	Q9CQX0
Immunogen :	The antiserum was produced against synthesized peptide derived from human OTUB2. AA range:133-182
Specificity :	OTUB2 Polyclonal Antibody detects endogenous levels of OTUB2 protein.
Formulation :	Liquid in PBS containing 50% glycerol, 0.5% BSA and 0.02% sodium azide.
Source :	Rabbit
Dilution :	Western Blot: 1/500 - 1/2000. Immunohistochemistry: 1/100 - 1/300. ELISA: 1/20000. Not yet tested in other applications.
Purification :	The antibody was affinity-purified from rabbit antiserum by affinity-chromatography using epitope-specific immunogen.
Concentration :	1 mg/ml
Storage_stability :	-20°C/1 year
Msds :	MSDS_Antibody.pdf
Other_name :	OTUB2; C14orf137; OTB2; OTU2; Ubiquitin thioesterase OTUB2; Deubiquitinating enzyme OTUB2; OTU domain-containing ubiquitin aldehyde-binding protein 2; Otubain-2; Ubiquitin-specific-processing protease OTUB2



Molecular
Weight :

27KD

Product Images



Western Blot analysis of various cells using OTUB2
Polyclonal Antibody diluted at 1 : 2000