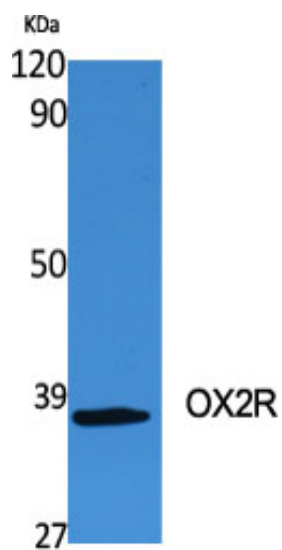


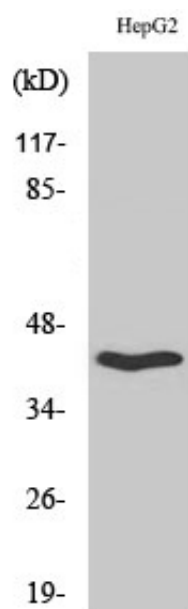
OX2R Polyclonal Antibody

Catalog_no :	AT3478
Applications :	WB,ELISA
Reactivity :	Human
Category :	抗原抗体
Size :	100µg/50µg/20µg
Gene_name :	CD200R1
Protein_name :	Cell surface glycoprotein CD200 receptor 1
Humangene_id :	131450
Humanswissprot_no :	Q8TD46
Immunogen :	The antiserum was produced against synthesized peptide derived from human MOX2R. AA range:241-290
Specificity :	OX2R Polyclonal Antibody detects endogenous levels of OX2R protein.
Formulation :	Liquid in PBS containing 50% glycerol, 0.5% BSA and 0.02% sodium azide.
Source :	Rabbit
Dilution :	Western Blot: 1/500 - 1/2000. ELISA: 1/40000. Not yet tested in other applications.
Purification :	The antibody was affinity-purified from rabbit antiserum by affinity-chromatography using epitope-specific immunogen.
Concentration :	1 mg/ml
Storage_stability :	-20°C/1 year
Msds :	MSDS_Antibody.pdf
Other_name :	CD200R1; CD200R; CRTR2; MOX2R; OX2R; Cell surface glycoprotein CD200 receptor 1; CD200 cell surface glycoprotein receptor; Cell surface glycoprotein OX2 receptor 1
Molecular Weight :	37KD

Product Images



Western Blot analysis of various cells using OX2R Polyclonal Antibody



Western Blot analysis of HepG2 cells using OX2R Polyclonal Antibody