

p130 Cas Polyclonal Antibody

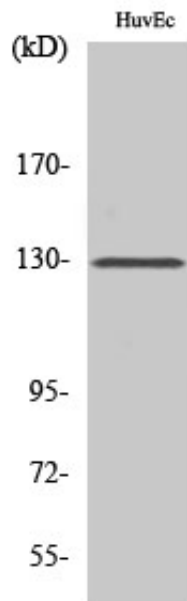
Catalog_no :	AT3489
Applications :	WB,IHC-p,ELISA
Reactivity :	Human,Mouse,Rat
Category :	抗原抗体
Size :	100µg/50µg/20µg
Gene_name :	BCAR1
Protein_name :	Breast cancer anti-estrogen resistance protein 1
Humangene_id :	9564
Humanswissprot_no :	P56945
Mousegene_id :	12927
Mouseswissprot_no :	Q61140
Ratgene_id :	25414
Ratswissprot_no :	Q63767
Immunogen :	The antiserum was produced against synthesized peptide derived from human p130 Cas. AA range:376-425
Specificity :	p130 Cas Polyclonal Antibody detects endogenous levels of p130 Cas protein.
Formulation :	Liquid in PBS containing 50% glycerol, 0.5% BSA and 0.02% sodium azide.
Source :	Rabbit
Dilution :	Western Blot: 1/500 - 1/2000. Immunohistochemistry: 1/100 - 1/300. ELISA: 1/5000. Not yet tested in other applications.
Purification :	The antibody was affinity-purified from rabbit antiserum by affinity-chromatography using epitope-specific immunogen.
Concentration :	1 mg/ml
Storage_stability :	-20°C/1 year
Msds :	MSDS_Antibody.pdf



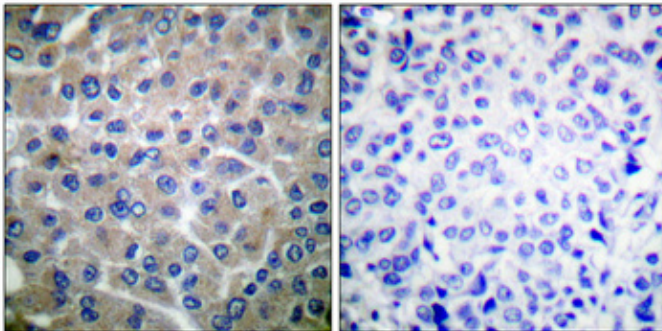
Other_name : BCAR1; CAS; CASS1; CRKAS; Breast cancer anti-estrogen resistance protein 1; CRK-associated substrate; Cas scaffolding protein family member 1; p130cas

Molecular Weight : 130KD

Product Images



Western Blot analysis of various cells using p130 Cas Polyclonal Antibody



Immunohistochemical analysis of paraffin-embedded Human breast cancer. Antibody was diluted at 1:100(4°, overnight). High-pressure and temperature Tris-EDTA, pH8.0 was used for antigen retrieval. Negative control (right) obtained from antibody was pre-absorbed by immunogen peptide.