

## p140Cap Polyclonal Antibody

|                     |   |
|---------------------|---|
| Catalog_no :        | AT3491  |
| Applications :      | WB,ELISA  |
| Reactivity :        | Human,Mouse,Rat   |
| Category :          | 抗原抗体  |
| Size :              | 100µg/50µg/20µg   |
| Gene_name :         | SRCIN1  |
| Protein_name :      | SRC kinase signaling inhibitor 1  |
| Humangene_id :      | <a href="#">80725</a>   |
| Humanswissprot_no : | <a href="#">Q9C0H9</a>  |
| Mousegene_id :      | <a href="#">56013</a>   |
| Mouseswissprot_no : | <a href="#">Q9QWI6</a>  |
| Ratgene_id :        | <a href="#">56029</a>   |
| Ratswissprot_no :   | <a href="#">Q9QXY2</a>  |
| Immunogen :         | The antiserum was produced against synthesized peptide derived from human SNIP. AA range:811-860                      |
| Specificity :       | p140Cap Polyclonal Antibody detects endogenous levels of p140Cap protein.   |
| Formulation :       | Liquid in PBS containing 50% glycerol, 0.5% BSA and 0.02% sodium azide.   |
| Source :            | Rabbit  |
| Dilution :          | Western Blot: 1/500 - 1/2000. ELISA: 1/20000. Not yet tested in other applications.                                   |
| Purification :      | The antibody was affinity-purified from rabbit antiserum by affinity-chromatography using epitope-specific immunogen. |
| Concentration :     | 1 mg/ml   |
| Storage_stability : | -20°C/1 year  |
| Msds :              | <a href="#">MSDS_Antibody.pdf</a>   |



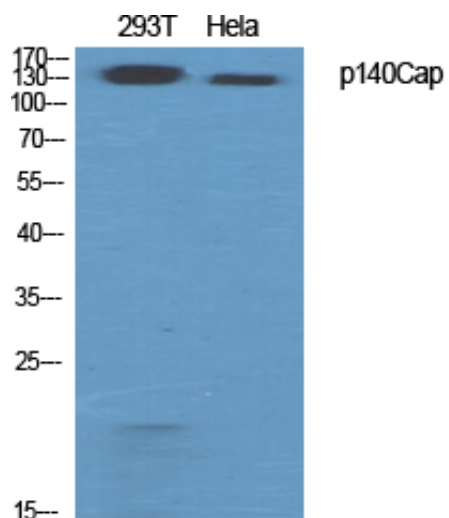
Other\_name : SRCIN1; KIAA1684; P140; SRC kinase signaling inhibitor 1; SNAP-25-interacting protein; SNIP; p130Cas-associated protein; p140Cap

---

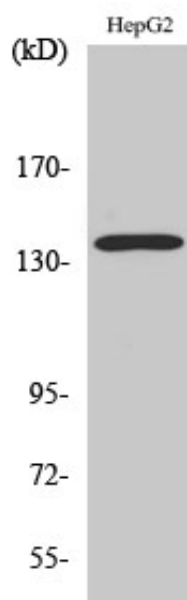
Molecular Weight : 112KD

---

## Product Images



Western Blot analysis of various cells using p140Cap Polyclonal Antibody diluted at 1 : 500



Western Blot analysis of HeLa cells using p140Cap Polyclonal Antibody diluted at 1 : 500