

p15 Polyclonal Antibody

Catalog_no :	AT3492
Applications :	WB,IHC-p,IF,ELISA
Reactivity :	Human,Mouse,Rat
Category :	抗原抗体
Size :	100µg/50µg/20µg
Gene_name :	CDKN2B
Protein_name :	Cyclin-dependent kinase 4 inhibitor B
Humangene_id	1030
:	
Humanswissprot	P42772
_no :	
Mousegene_id :	12579
Mouseswissprot	P55271
_no :	
Ratgene_id :	25164
Ratswissprot_no	P55272
:	
Immunogen :	The antiserum was produced against synthesized peptide derived from human p15 INK. AA range:89-138
Specificity :	p15 Polyclonal Antibody detects endogenous levels of p15 protein.
Formulation :	Liquid in PBS containing 50% glycerol, 0.5% BSA and 0.02% sodium azide.
Source :	Rabbit
Dilution :	Western Blot: 1/500 - 1/2000. Immunohistochemistry: 1/100 - 1/300. Immunofluorescence: 1/200 - 1/1000. ELISA: 1/40000. Not yet tested in other applications.
Purification :	The antibody was affinity-purified from rabbit antiserum by affinity-chromatography using epitope-specific immunogen.
Concentration :	1 mg/ml
Storage_stability	-20°C/1 year
:	

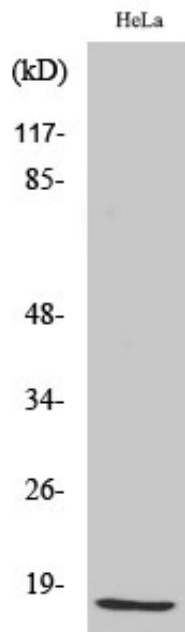


MsdS : MSDS_Antibody.pdf

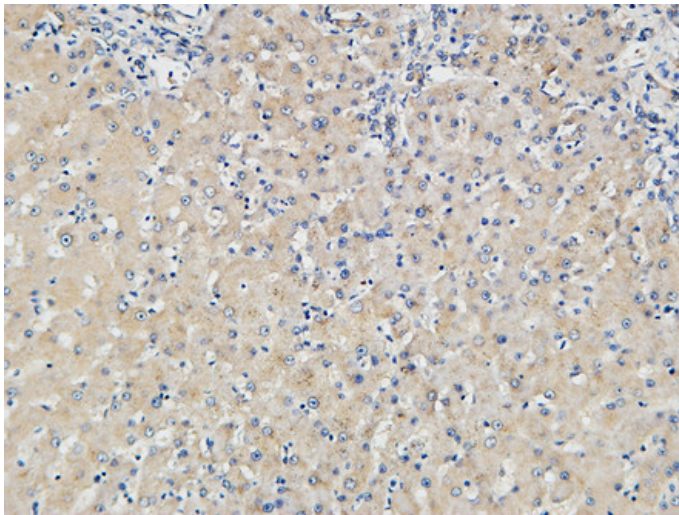
Other_name : CDKN2B; MTS2; Cyclin-dependent kinase 4 inhibitor B; Multiple tumor suppressor 2; MTS-2; p14-INK4b; p15-INK4b; p15INK4B

Molecular Weight : 14KD

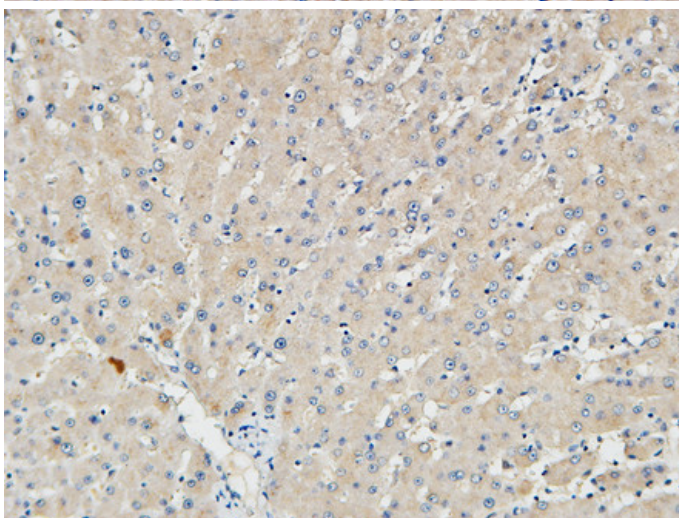
Product Images



Western Blot analysis of various cells using p15 Polyclonal Antibody diluted at 1 : 500

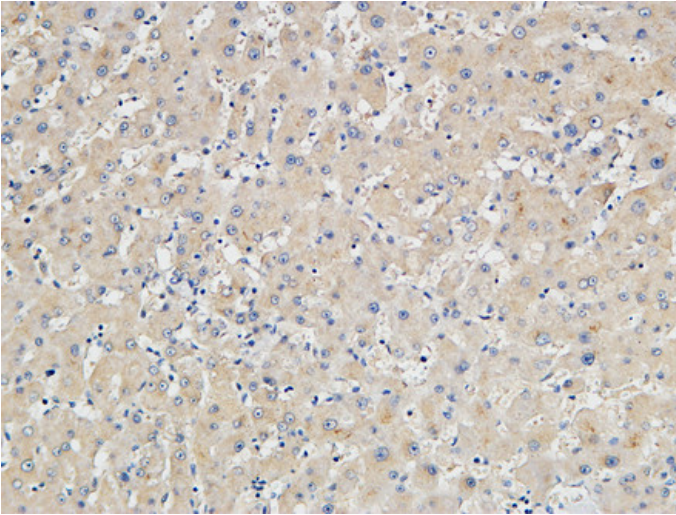


Immunohistochemical analysis of paraffin-embedded Human Right liver. 1, Antibody was diluted at 1:100(4°,overnight). 2, High-pressure and temperature EDTA, pH8.0 was used for antigen retrieval. 3,Secondary antibody was diluted at 1:200(room temperature, 30min).

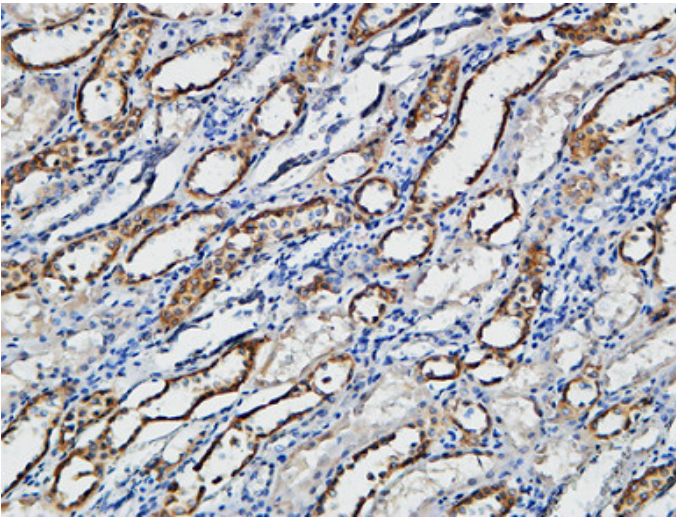


Immunohistochemical analysis of paraffin-embedded Human Right liver. 1, Antibody was diluted at 1:100(4°,overnight). 2, High-pressure and temperature EDTA, pH8.0 was used for antigen retrieval. 3,Secondary antibody was diluted at 1:200(room temperature, 30min).

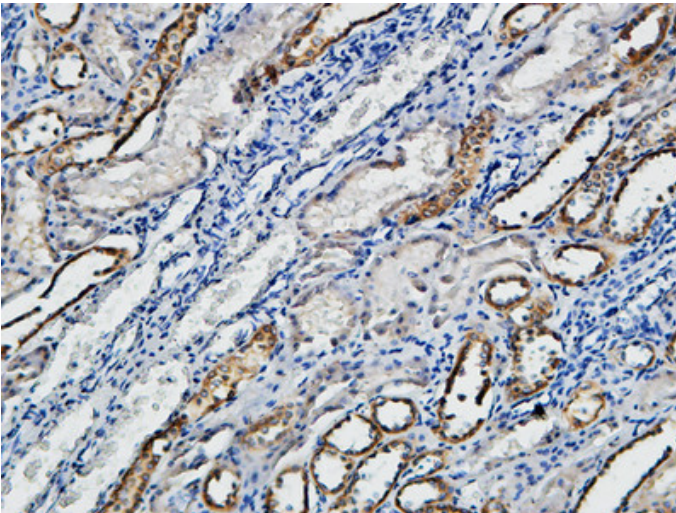
Immunohistochemical analysis of paraffin-embedded Human Right liver. 1, Antibody was diluted at



1:100(4°,overnight). 2, High-pressure and temperature EDTA, pH8.0 was used for antigen retrieval. 3,Secondary antibody was diluted at 1:200(room temperature, 30min).



Immunohistochemical analysis of paraffin-embedded Human Right kidney. 1, Antibody was diluted at 1:100(4°,overnight). 2, High-pressure and temperature EDTA, pH8.0 was used for antigen retrieval. 3,Secondary antibody was diluted at 1:200(room temperature, 30min).



Immunohistochemical analysis of paraffin-embedded Human Right kidney. 1, Antibody was diluted at 1:100(4°,overnight). 2, High-pressure and temperature EDTA, pH8.0 was used for antigen retrieval. 3,Secondary antibody was diluted at 1:200(room temperature, 30min).

Immunohistochemical analysis of paraffin-embedded Human Right kidney. 1, Antibody was diluted at 1:100(4°,overnight). 2, High-pressure and temperature EDTA, pH8.0 was used for antigen retrieval. 3,Secondary antibody was diluted at 1:200(room temperature, 30min).

