

## p16 Polyclonal Antibody

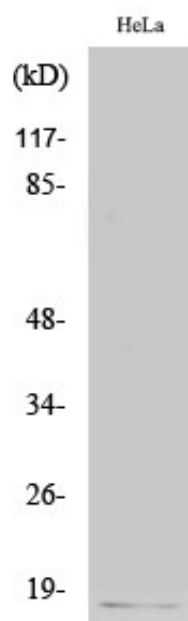
Catalog_no :	AT3493
Applications :	WB,ELISA
Reactivity :	Human,Mouse
Category :	抗原抗体
Size :	100µg/50µg/20µg
Gene_name :	CDKN2A
Protein_name :	Cyclin-dependent kinase inhibitor 2A isoforms 1/2/3
Humangene_id :	<a href="#">1029</a>
Humanswissprot_no :	<a href="#">P42771</a>
Mousegene_id :	<a href="#">12578</a>
Mouseswissprot_no :	<a href="#">P51480</a>
Immunogen :	The antiserum was produced against synthesized peptide derived from human p16 INK. AA range:10-59
Specificity :	p16 Polyclonal Antibody detects endogenous levels of p16 protein.
Formulation :	Liquid in PBS containing 50% glycerol, 0.5% BSA and 0.02% sodium azide.
Source :	Rabbit
Dilution :	Western Blot: 1/500 - 1/2000. ELISA: 1/20000. Not yet tested in other applications.
Purification :	The antibody was affinity-purified from rabbit antiserum by affinity-chromatography using epitope-specific immunogen.
Concentration :	1 mg/ml
Storage_stability :	-20°C/1 year
Msds :	MSDS_Antibody.pdf
Other_name :	CDKN2A; CDKN2; MTS1; Cyclin-dependent kinase inhibitor 2A; isoforms 1/2/3; Cyclin-dependent kinase 4 inhibitor A; CDK4I; Multiple tumor suppressor 1; MTS-1; p16-INK4a; p16-INK4; p16INK4A
Molecular	16KD



Weight :

---

## Product Images



Western Blot analysis of various cells using p16 Polyclonal Antibody