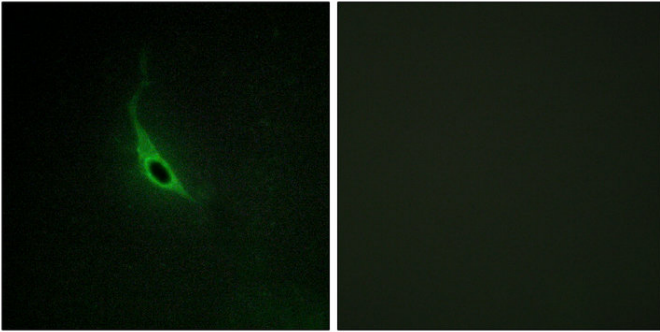


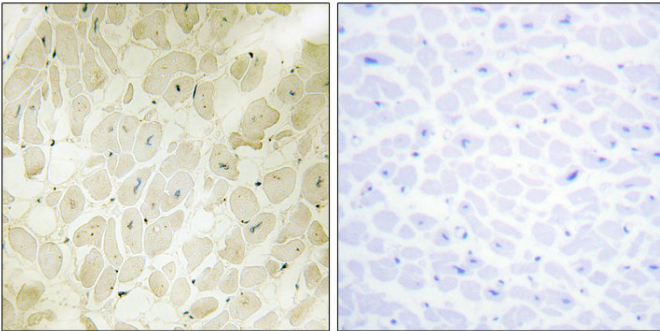
p164-RhoGEF Polyclonal Antibody

Catalog_no :	AT3494
Applications :	IHC-p,IF,ELISA
Reactivity :	Human,Mouse
Category :	抗原抗体
Size :	100µg/50µg/20µg
Gene_name :	ARHGEF17
Protein_name :	Rho guanine nucleotide exchange factor 17
Humangene_id :	9828
Humanswissprot_no :	Q96PE2
Mousegene_id :	207212
Mouseswissprot_no :	Q80U35
Immunogen :	The antiserum was produced against synthesized peptide derived from human ARHGEF17. AA range:431-480
Specificity :	p164-RhoGEF Polyclonal Antibody detects endogenous levels of p164-RhoGEF protein.
Formulation :	Liquid in PBS containing 50% glycerol, 0.5% BSA and 0.02% sodium azide.
Source :	Rabbit
Dilution :	Immunohistochemistry: 1/100 - 1/300. Immunofluorescence: 1/200 - 1/1000. ELISA: 1/5000. Not yet tested in other applications.
Purification :	The antibody was affinity-purified from rabbit antiserum by affinity-chromatography using epitope-specific immunogen.
Concentration :	1 mg/ml
Storage_stability :	-20°C/1 year
Msds :	MSDS_Antibody.pdf
Other_name :	ARHGEF17; KIAA0337; TEM4; Rho guanine nucleotide exchange factor 17; 164 kDa Rho-specific guanine-nucleotide exchange factor; p164-RhoGEF; p164RhoGEF; Tumor endothelial marker 4

Product Images



Immunofluorescence analysis of HepG2 cells, using CARD6 Antibody diluted at 1:50. The picture on the right is blocked with the synthesized peptide.



Immunohistochemical analysis of paraffin-human heart. 1, Antibody was diluted at 1:200(4°, overnight). 2, TRIS-EDTA of pH8.0 was used for antigen retrieval. 3, Secondary antibody was diluted at 1:200(room temperature, 30min). The picture on the right is blocked with the synthesized peptide.