



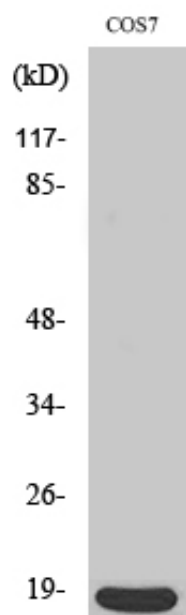
p18 Polyclonal Antibody

Catalog_no :	<u>AT3495</u>
Applications :	<u>WB,IHC-p,ELISA</u>
Reactivity :	<u>Human,Mouse,Monkey</u>
Category :	<u>抗原抗体</u>
Size :	<u>100µg/50µg/20µg</u>
Gene_name :	<u>CDKN2C</u>
Protein_name :	<u>Cyclin-dependent kinase 4 inhibitor C</u>
Humangene_id	<u>1031</u>
:	
Humanswissprot	<u>P42773</u>
_no :	
Mousegene_id :	<u>12580</u>
Mouseswissprot	<u>Q60772</u>
_no :	
Immunogen :	<u>The antiserum was produced against synthesized peptide derived from human p18 INK. AA range:111-160</u>
Specificity :	<u>p18 Polyclonal Antibody detects endogenous levels of p18 protein.</u>
Formulation :	<u>Liquid in PBS containing 50% glycerol, 0.5% BSA and 0.02% sodium azide.</u>
Source :	<u>Rabbit</u>
Dilution :	<u>Western Blot: 1/500 - 1/2000. Immunohistochemistry: 1/100 - 1/300. ELISA: 1/20000. Not yet tested in other applications.</u>
Purification :	<u>The antibody was affinity-purified from rabbit antiserum by affinity-chromatography using epitope-specific immunogen.</u>
Concentration :	<u>1 mg/ml</u>
Storage_stability	<u>-20°C/1 year</u>
:	
Msds :	<u>MSDS_Antibody.pdf</u>
Other_name :	<u>CDKN2C; CDKN6; Cyclin-dependent kinase 4 inhibitor C; Cyclin-dependent kinase 6 inhibitor; p18-INK4c; p18-INK6</u>
Molecular	<u>18KD</u>



Weight :

Product Images



Western Blot analysis of various cells using p18 Polyclonal Antibody