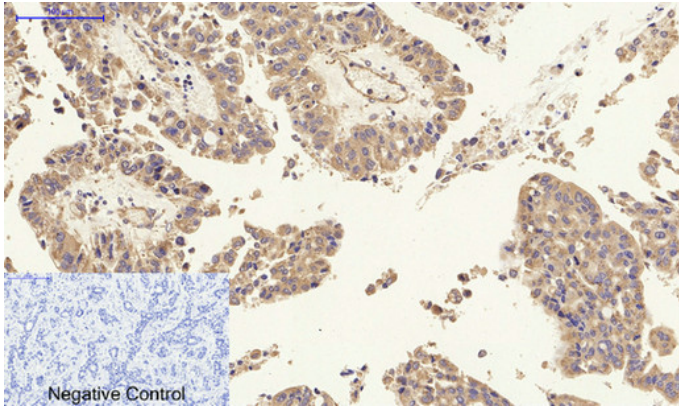




p27 Polyclonal Antibody

Catalog_no :	AT3501
Applications :	WB,IHC-p,ELISA
Reactivity :	Human
Category :	抗原抗体
Size :	100µg/50µg/20µg
Gene_name :	CDKN1B
Protein_name :	Cyclin-dependent kinase inhibitor 1B
Humangene_id :	1027
Humanswissprot_no :	P46527
Immunogen :	The antiserum was produced against synthesized peptide derived from human p27 Kip1. AA range:149-198
Specificity :	p27 Polyclonal Antibody detects endogenous levels of p27 protein.
Formulation :	Liquid in PBS containing 50% glycerol, 0.5% BSA and 0.02% sodium azide.
Source :	Rabbit
Dilution :	WB 1:500-2000, ELISA 1:10000-20000 IHC 1:50-300
Purification :	The antibody was affinity-purified from rabbit antiserum by affinity-chromatography using epitope-specific immunogen.
Concentration :	1 mg/ml
Storage_stability :	-20°C/1 year
Msds :	MSDS_Antibody.pdf
Other_name :	CDKN1B; KIP1; Cyclin-dependent kinase inhibitor 1B; Cyclin-dependent kinase inhibitor p27; p27Kip1
Molecular Weight :	27KD

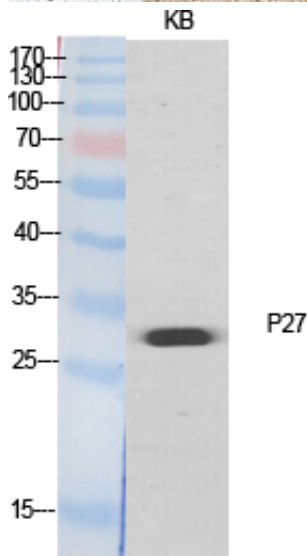
Product Images



Immunohistochemical analysis of paraffin-embedded Human-liver-cancer tissue. 1,p27 Polyclonal Antibody was diluted at 1:200(4°C,overnight). 2, Sodium citrate pH 6.0 was used for antibody retrieval(>98°C,20min). 3,Secondary antibody was diluted at 1:200(room tempeRature, 30min). Negative control was used by secondary antibody only.



Immunohistochemical analysis of paraffin-embedded Human-kidney-cancer tissue. 1,p27 Polyclonal Antibody was diluted at 1:200(4°C,overnight). 2, Sodium citrate pH 6.0 was used for antibody retrieval(>98°C,20min). 3,Secondary antibody was diluted at 1:200(room tempeRature, 30min). Negative control was used by secondary antibody only.



Western Blot analysis of various cells using p27 Polyclonal Antibody diluted at 1 : 500

Western Blot analysis of COLO205 cells using p27 Polyclonal Antibody diluted at 1 : 500

