

p35 Polyclonal Antibody

Catalog_no :	AT3510
Applications :	WB,IHC-p,IF,ELISA
Reactivity :	Human,Mouse,Rat
Category :	抗原抗体
Size :	100µg/50µg/20µg
Gene_name :	CDK5R1
Protein_name :	Cyclin-dependent kinase 5 activator 1
Humangene_id :	8851
Humanswissprot_no :	Q15078
Mousegene_id :	12569
Mouseswissprot_no :	P61809
Ratgene_id :	116671
Ratswissprot_no :	P61810
Immunogen :	The antiserum was produced against synthesized peptide derived from human CDK5R1. AA range:11-60
Specificity :	p35 Polyclonal Antibody detects endogenous levels of p35 protein.
Formulation :	Liquid in PBS containing 50% glycerol, 0.5% BSA and 0.02% sodium azide.
Source :	Rabbit
Dilution :	Western Blot: 1/500 - 1/2000. Immunohistochemistry: 1/100 - 1/300. Immunofluorescence: 1/200 - 1/1000. ELISA: 1/20000. Not yet tested in other applications.
Purification :	The antibody was affinity-purified from rabbit antiserum by affinity-chromatography using epitope-specific immunogen.
Concentration :	1 mg/ml
Storage_stability :	-20°C/1 year

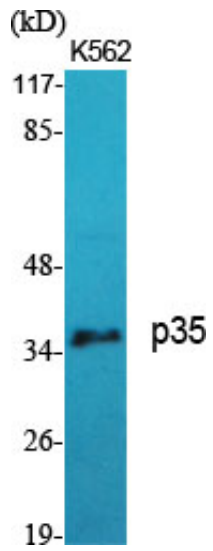


MsdS : MSDS_Antibody.pdf

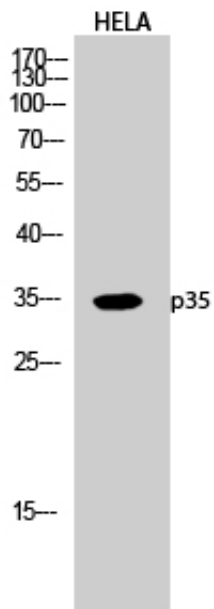
Other_name : CDK5R1; CDK5R; NCK5A; Cyclin-dependent kinase 5 activator 1; CDK5 activator 1; Cyclin-dependent kinase 5 regulatory subunit 1; TPKII regulatory subunit

Molecular Weight : 38KD

Product Images



Western Blot analysis of various cells using p35 Polyclonal Antibody diluted at 1 : 1000



Western Blot analysis of HELA cells using p35 Polyclonal Antibody diluted at 1 : 1000