

## p52 S6 kinase Polyclonal Antibody

Catalog_no :	AT3523
Applications :	WB,IF,ELISA
Reactivity :	Human,Mouse
Category :	抗原抗体
Size :	100µg/50µg/20µg
Gene_name :	RPS6KC1
Protein_name :	Ribosomal protein S6 kinase delta-1
Humangene_id :	<a href="#">26750</a>
Humanswissprot_no :	<a href="#">Q96S38</a>
Mousegene_id :	<a href="#">320119</a>
Mouseswissprot_no :	<a href="#">Q8BLK9</a>
Immunogen :	The antiserum was produced against synthesized peptide derived from human RPS6KC1. AA range:231-280
Specificity :	p52 S6 kinase Polyclonal Antibody detects endogenous levels of p52 S6 kinase protein.
Formulation :	Liquid in PBS containing 50% glycerol, 0.5% BSA and 0.02% sodium azide.
Source :	Rabbit
Dilution :	Western Blot: 1/500 - 1/2000. Immunofluorescence: 1/200 - 1/1000. ELISA: 1/20000. Not yet tested in other applications.
Purification :	The antibody was affinity-purified from rabbit antiserum by affinity-chromatography using epitope-specific immunogen.
Concentration :	1 mg/ml
Storage_stability :	-20°C/1 year
Msds :	MSDS_Antibody.pdf
Other_name :	RPS6KC1; RPK118; Ribosomal protein S6 kinase delta-1; S6K-delta-1; 52 kDa ribosomal protein S6 kinase; Ribosomal S6 kinase-like protein with two PSK domains 118 kDa protein; SPHK1-binding protein

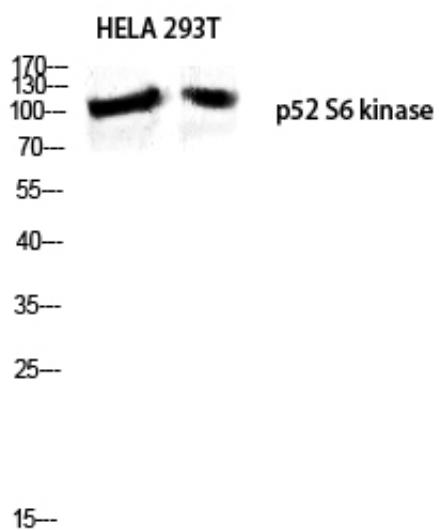


Molecular  
Weight :

117KD

---

## Product Images



Western blot analysis of HELA 293T lysis using p52 S6 kinase antibody. Antibody was diluted at 1:500