



p53R2 Polyclonal Antibody

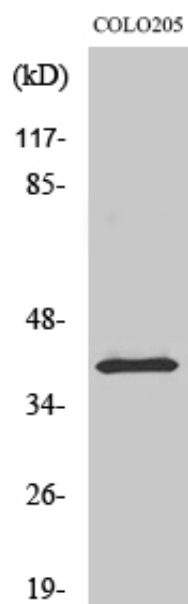
Catalog_no :	AT3543
Applications :	WB,ELISA
Reactivity :	Human,Mouse,Rat
Category :	抗原抗体
Size :	100µg/50µg/20µg
Gene_name :	RRM2B
Protein_name :	Ribonucleoside-diphosphate reductase subunit M2 B
Humangene_id :	50484
Humanswissprot_no :	Q7LG56
Mousegene_id :	382985
Mouseswissprot_no :	Q6PEE3
Immunogen :	Synthesized peptide derived from the Internal region of human p53R2.
Specificity :	p53R2 Polyclonal Antibody detects endogenous levels of p53R2 protein.
Formulation :	Liquid in PBS containing 50% glycerol, 0.5% BSA and 0.02% sodium azide.
Source :	Rabbit
Dilution :	Western Blot: 1/500 - 1/2000. ELISA: 1/40000. Not yet tested in other applications.
Purification :	The antibody was affinity-purified from rabbit antiserum by affinity-chromatography using epitope-specific immunogen.
Concentration :	1 mg/ml
Storage_stability :	-20°C/1 year
Msds :	MSDS_Antibody.pdf
Other_name :	RRM2B; P53R2; Ribonucleoside-diphosphate reductase subunit M2 B; TP53-inducible ribonucleotide reductase M2 B; p53-inducible ribonucleotide reductase small subunit 2-like protein; p53R2
Molecular Weight :	40KD



专注二抗产品

Biodragon旗下品牌

Product Images



Western Blot analysis of various cells using p53R2
Polyclonal Antibody diluted at 1 : 2000