

p68 RNA Helicase Polyclonal Antibody

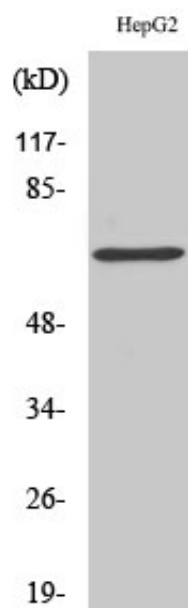
Catalog_no :	AT3548
Applications :	WB,IF,ELISA
Reactivity :	Human,Mouse,Rat
Category :	抗原抗体
Size :	100µg/50µg/20µg
Gene_name :	DDX5
Protein_name :	Probable ATP-dependent RNA helicase DDX5
Humangene_id :	1655
Humanswissprot_no :	P17844
Mouseswissprot_no :	Q61656
Immunogen :	The antiserum was produced against synthesized peptide derived from human DDX5/DEAD-box Protein 5. AA range:565-614
Specificity :	p68 RNA Helicase Polyclonal Antibody detects endogenous levels of p68 RNA Helicase protein.
Formulation :	Liquid in PBS containing 50% glycerol, 0.5% BSA and 0.02% sodium azide.
Source :	Rabbit
Dilution :	Western Blot: 1/500 - 1/2000. Immunofluorescence: 1/200 - 1/1000. ELISA: 1/20000. Not yet tested in other applications.
Purification :	The antibody was affinity-purified from rabbit antiserum by affinity-chromatography using epitope-specific immunogen.
Concentration :	1 mg/ml
Storage_stability :	-20°C/1 year
Msds :	MSDS_Antibody.pdf
Other_name :	DDX5; G17P1; HELR; HLR1; Probable ATP-dependent RNA helicase DDX5; DEAD box protein 5; RNA helicase p68
Molecular Weight :	70KD



专注二抗产品

Biodragon旗下品牌

Product Images



Western Blot analysis of various cells using p68 RNA Helicase Polyclonal Antibody cells nucleus extracted by Minute TM Cytoplasmic and Nuclear Fractionation kit (SC-003, Inventbiotech, MN, USA).